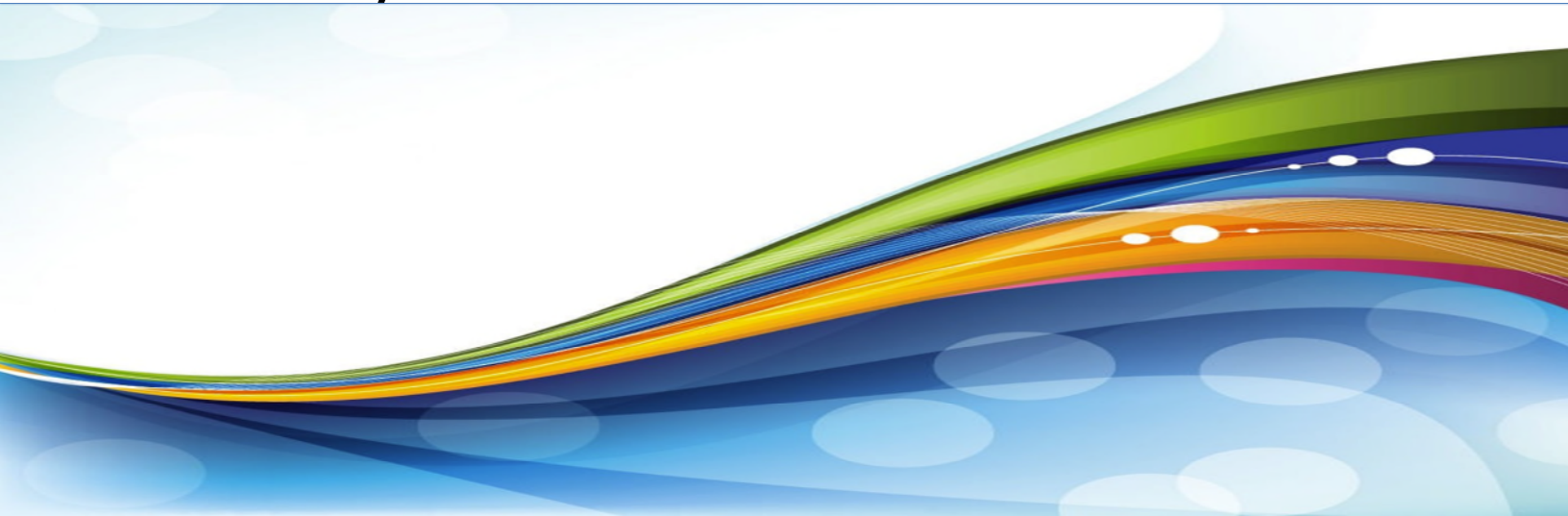




Barton County, Ellinwood, KS Community Health Needs Assessment Round #2



May 2015

**VVV Research & Development, LLC
Olathe, KS**

Community Health Needs Assessment

Table of Contents

I. Executive Summary

II. Methodology

- a) CHNA Scope & Purpose
- b) Local Collaborating CHNA parties (The identity of any and all organizations with which the organization collaborated and third parties that engaged to assist with the CHNA)
- c) CHNA & Town Hall Research Process (A description of the process & methods used to conduct the CHNA, a description of how the organization considered the input of persons representing the community, and an explanation of the process / criteria used in prioritizing such needs)
- d) Community Profile (A description of the community served by the facility and how the community was determined)

III. Community Health Status

- a) Town Hall CHNA Findings: Areas of Strengths & Areas to Change and/or Improve
- b) County Health Area of Future Focus (A prioritized description of all of the community needs identified by the CHNA)
- c) Historical Health Statistics

IV. Inventory of Existing County Health Resources

- a) A description of the existing health care facilities and other resources within the community available to meet the needs identified through the CHNA

V. Detail Exhibits

- a) Patient Origin & Access to Care
- b) Town Hall Attendees, Notes & Feedback (Who attended with qualifications)
- c) Public Notice & News
- d) Primary Research Detail *Shaded lines note IRS requirements*

I. Executive Summary

[VVV Research & Development, LLC]

I. Executive Summary

Barton County, KS - 2015 Community Health Needs Assessment (CHNA) Round #2

Creating healthy communities requires a high level of mutual understanding and collaboration among community leaders. The development of this assessment brings together community health leaders and providers, along with local residents, to research and prioritize county health needs and document community health delivery successes. This health assessment will serve as the foundation for community health improvement efforts for the next three years. The last CHNA for Barton County, KS was published in May of 2012. (Note: The Patient Protection and Affordable Care Act (ACA) require not-for-profit hospitals to conduct a CHNA every three years and adopt an implementation strategy to meet the needs identified by the CHNA). This assessment was coordinated and produced by VVW Research & Development, LLC (Olathe, Kansas) under the direction of Vince Vandehaar, MBA.

Important CHNA benefits for both the local hospital and health department, as well as for the community, are as follows: 1) Increases knowledge of community health needs and resources 2) Creates a common understanding of the priorities of the community's health needs 3) Enhances relationships and mutual understanding between and among stakeholders 4) Provides a basis upon which community stakeholders can make decisions about how they can contribute to improving the health of the community 5) Provides rationale for current and potential funders to support efforts to improve the health of the community 6) Creates opportunities for collaboration in delivery of services to the community and 7) Provides guidance to the hospital and local health department for how they can align their services and community benefit programs to best meet needs.

Town Hall "Community Health Strengths" cited for Ellinwood District Hospital's Primary Service Area are as follows:

Ellinwood, KS - Community Health "Strengths"			
#	Topic	#	Topic
1	Health Department	9	Employer DOT Drug Testing
2	Stable Medical Staff	10	School Lunch Programs
3	New Wellness Center	11	Lab Fairs
4	Local Hospital	12	Summer Lunch Program, No Income/Age Restrictions
5	Good Citizen Involvement	13	Media Supportive of Health
6	Emergency Room	14	Youth Recreation Activities
7	Strong Community Following	15	Specialists Come into Community
8	Gold Belt Community Foundation		

Town Hall "Community Health Changes and/or Improvements Ranking" cited for Ellinwood District Hospital's Primary Service Area are as follows:

Ellinwood District Hospital PSA				
Town Hall Community Health Needs Priorities (39 Attendees)				
#	Health Needs to Change and/or Improve	Votes	%	Accum
1	Update Hospital/Clinic	13	18.1%	18.1%
2	Develop a Pharmacy	10	13.9%	31.9%
3	Improve Assessment/Placement for Mental Health	10	13.9%	45.8%
4	Decrease Obesity (Eating/Exercise)	8	11.1%	56.9%
5	Provide Senior Physical Activity at a Reasonable Price	5	6.9%	63.9%
6	Increase Immunization Rates	4	5.6%	69.4%
7	Decrease Teenage Pregnancy	3	4.2%	73.6%
8	Decrease Uninsured	3	4.2%	77.8%
9	Decrease Unmarried Mothers	3	4.2%	81.9%
Total Town Hall Votes		72	100.0%	
Note:	Other items receiving votes: Caregiver Support, Infant Mortality/Prenatal Care, Sex Education in schools, Substance Abuse Education, Economic Development, Ambulance Staffing, Tobacco, Suicide Prevention, Youth Activities to Keep Children Healthy, Child Care Services, Communication of Process Changes to Community, Diabetic Education, Workers Comp Communication			

Key Community Health Needs Assessment Conclusions from secondary research for Clara Barton Hospital's Primary Service Area are as follows:

KS HEALTH RANKINGS: According to the 2014 RWJ County Health Rankings study, Barton County's highest State of Kansas rankings (of 105 counties) were in Morbidity, Health Outcomes and Social & Economic Factors.

- TAB 1: Barton County has a population of 27,509 residents as of 2013, a decline in growth of 0.6%. 17.0% of Barton County's population consists of the elderly (65+), and 34.4% percent of these elderly people (65+) are living alone. The percent of Hispanics and Latinos in Barton County is 14.1%, higher than the Kansas rural norm of 5.2%. 23% percent of children in Barton County live in single-parent households. The percent of people living below the poverty level in is 13.9% The percent of people with limited access to healthy foods is 8%. The voter turnout in Barton County is 61.2%, lower than the Kansas rural norm of 61.2%.
- TAB 2: Barton County's per capita income equals \$25,463. The median value of owner-occupied housing units is \$73,600. The percent of unemployed workers in the civilian labor force in Barton County is 2.3%. Barton County has a lower percentage of low-income persons with low access to a grocery store (7.6%), compared to the Kansas rural norm of 11.4%. The percent of solo drivers with a long commute is 15.9%. The

number of people in Barton County who are low-income and SNAP participants is 19.8%, lower than the Kansas rural average of 12.3%.

- TAB 3: In Barton County, 49.7% of students are eligible for the free or reduced lunch program, compared to the Kansas rural norm of 34.2%. The county maintains a 87.4% high school graduation rate. The percent of persons (25+) with a Bachelor's degree or higher in Barton County is 18.4%.
- TAB 4: The percent of births where prenatal care began in the first trimester in Barton County is 75%, lower than the Kansas rural norm of 78.9%. The percent of births with low birth weights is 6%. The percent of births occurring to unmarried women in Barton County is 46.4%, higher than the Kansas rural norm of 31.3%.
- TAB 5: The ratio of population to primary care physicians in Barton County is 1958. The staffed hospital bed ratio in Barton County is 2.9%, lower than the Kansas rural norm of 13.1%. The COPD hospital admission rate in Barton County is 135. The bacterial pneumonia hospital admission rate in Barton County is 319, lower than the Kansas rural norm of 488.
- TAB 6: The depression rate for the Medicare population in Barton County is 14.3%. The percent of alcohol-impaired driving deaths in Barton County (28.6%) is lower than the Kansas rural norm of 36.4%. The percentage of people in Barton County with inadequate social support is 16%.
- TAB 7: The adult obesity rate in Barton County is 34%. The percent of adults who binge drink in Barton County (11.4%) is lower than the Kansas rural norm of 16.7%. The percent of people in Barton County who are physically inactive is 29%. 100% of the population in Barton County served unaffected by SDWA Nitrate violations. The percent of the Medicare population in Barton County with Diabetes is 26.6%, and the percent of the Medicare population with Alzheimer's disease or dementia is 8.2%.
- TAB 8: The uninsured adult population rate in Barton County is 20.9%, higher than the Kansas rural norm of 17.4%.
- TAB 9: In Barton County, the infant mortality rate is 7%, higher than the Kansas rural norm of 3.9%. The age-adjusted years of potential life lost due to traffic injury in Barton County is 1,629. The age-adjusted suicide mortality rate in Barton County is 34, higher than the Kansas rural norm of 14.
- TAB 10: The percent of infants fully immunized at 24 months in Barton County is 71.1%, higher than the Kansas rural norm of 78.6%. The percent of diabetic screenings in Barton County is 81%. The percent of adults in Barton County who report consuming fruit and/or vegetables less than one time per day is high. The percent of adults 65+ who were immunized against influenza is low in Barton County.

Key 2015 Community Feedback Conclusions: Still a need for 1) Behavioral / Substance Abuse, 2) Obesity / Fitness, 3) Substance Abuse Education and 4) Economic Development.

CHNA Round #2 Feedback 2015 - Barton Co, KS						
From our last Community Health Needs Assessment (2012), a number of health needs were identified as a priority. Are any of these 2012 CHNA needs still an "ongoing problem" in our community?						
Answer Options	Not a problem	Somewhat of a Problem	Major Problem	% Problem	Response Count	Pressing Rank
Behavioral / Substance Abuse	21	78	51	86.0%	150	3
Obesity / Fitness	22	76	50	85.1%	148	1
Substance Abuse Education	25	86	31	82.4%	142	12
Economic Development	28	84	35	81.0%	147	9
Teen Pregnancy Rate	28	89	22	79.9%	139	19
Lack of Child Care Options	31	79	35	78.6%	145	7
Teenage Pregnancy	33	89	22	77.1%	144	15
Mental Health Services	35	72	38	75.9%	145	4
Infant Care, New Mom Education	40	84	20	72.2%	144	17
Wellness / Preventative Care	45	87	18	70.0%	150	5
Seniors Services	46	80	20	68.5%	146	11
Community Awareness of Services	48	85	19	68.4%	152	6
Heart Health	47	84	16	68.0%	147	13
Hospital facilities / Equipment	54	69	28	64.2%	151	2
HC Transportation	53	76	14	62.9%	143	18
Diabetic Education	56	74	16	61.6%	146	14
Access to Care (Underinsured)	59	78	9	59.6%	146	8
EMS Coverage	80	57	12	46.3%	149	16
Local Pharmacy Services	83	32	37	45.4%	152	10

II. Methodology

[VVV Research & Development, LLC]

II. Methodology

a) Scope and Purpose

The new federal Patient Protection and Affordable Care Act requires that each registered 501(c)3 hospital conduct a Community Health Needs Assessment (CHNA) at least once every three years and adopt a strategy to meet community health needs. Any hospital who has filed a 990 is required to conduct a CHNA. IRS Notice 2011-52 was released in late fall of 2011 to give notice and request comments.

JOB #1: Meet/Report IRS 990 Required Documentation

1. A description of the community served by the facility and how the community was determined;
2. A description of the process and methods used to conduct the CHNA;
3. The identity of any and all organizations with which the organization collaborated and third parties that it engaged to assist with the CHNA;
4. A description of how the organization considered the input of persons representing the community (*e.g., through meetings, focus groups, interviews, etc.*), who those persons are, and their qualifications;
5. A prioritized description of all of the community needs identified by the CHNA and an explanation of the process and criteria used in prioritizing such needs; and
6. A description of the existing health care facilities and other resources within the community available to meet the needs identified through the CHNA.

Section 501(r) provides that a CHNA must take into account input from persons who represent the broad interests of the community served by the hospital facility, including individuals with special knowledge of or expertise in public health. Under the Notice, the persons consulted must also include: Government agencies with current information relevant to the health needs of the community and representatives or members in the community that are medically underserved, low-income, minority populations, and populations with chronic disease needs. In addition, a hospital organization may seek input from other individuals and organizations located in or serving the hospital facility's defined community (*e.g., health care consumer advocates, academic experts, private businesses, health insurance and managed care organizations, etc.*).

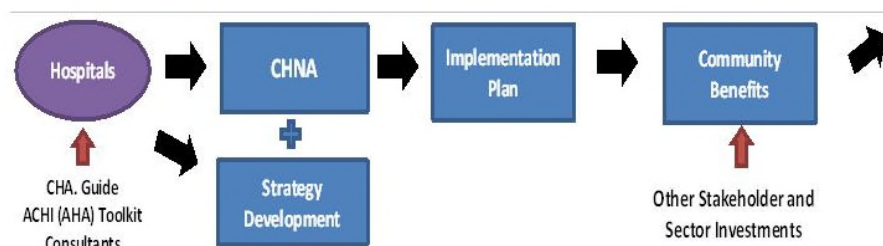
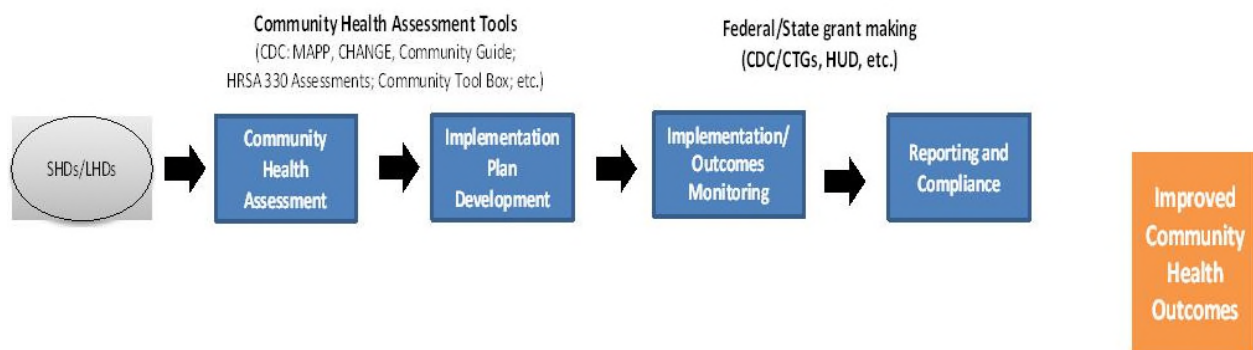
JOB #2: Making a CHNA Widely Available to the Public

The Notice provides that a CHNA will be considered to be "conducted" in the taxable year that the written report of the CHNA findings is made widely available to the public. The Notice also indicates that the IRS intends to pattern its rules for **making a CHNA "widely available to the public"** after the rules currently in effect for Form 990. Accordingly, an organization would make a **facility's written report** widely available by posting the final report on its website either in the form of (1) the report itself, in a readily accessible format or (2) a link to another organization's website, along with instructions for accessing the report on that website. *The Notice clarifies that an organization must post the CHNA for each facility until the date on which its subsequent CHNA for that facility is posted.*

JOB #3: Adopt an Implementation Strategy by Hospital

Section 501(r) requires a hospital organization to adopt an implementation strategy to meet the needs identified through each CHNA. The Notice defines an “implementation strategy” as a written plan that addresses each of the needs identified in a CHNA by either (1) describing how the facility plans to meet the health need or (2) identifying the health need as one that the facility does not intend to meet and explaining why the facility does not intend to meet it. A hospital organization may develop an implementation strategy in collaboration with other organizations, which must be identified in the implementation strategy. As with the CHNA, a hospital organization that operates multiple hospital facilities must have a separate written implementation strategy for each of its facilities.

Great emphasis has been given to work hand-in-hand with leaders from both hospitals and the local county health department. A common approach has been adopted to create the CHNA, leading to aligned implementation plans and community reporting.



IRS Notice 2011-52 Overview

Notice and Request for Comments Regarding the Community Health Needs Assessment Requirements for Tax-exempt Hospitals

Applicability of CHNA Requirements to “Hospital Organizations”

The CHNA requirements apply to “hospital organizations,” which are defined in Section 501(r) to include (1) organizations that operate one or more state-licensed hospital facilities, and (2) any other organization that the Treasury Secretary determines is providing hospital care as its principal function or basis for exemption.

How and When to Conduct a CHNA

Under Section 501(r), a hospital organization is required to conduct a CHNA for each of its hospital facilities once every three taxable years. ***The CHNA must take into account input from persons representing the community served by the hospital facility and must be made widely available to the public. The CHNA requirements are effective for taxable years beginning after March 23, 2012.*** As a result, a hospital organization with a June 30 fiscal year end must conduct an initial CHNA for each of its hospital facilities by June 30, 2013, either during the fiscal year ending June 30, 2013 or during either of the two previous fiscal years.

Determining the Community Served

A CHNA must identify and assess the health needs of the **community served** by the hospital facility. Although the Notice suggests that geographic location should be the primary basis for defining the community served, it provides that the organization may also take into account the target populations served by the facility (e.g., children, women, or the aged) and/or the facility’s principal functions (e.g., specialty area or targeted disease). *A hospital organization, however, will not be permitted to define the community served in a way that would effectively circumvent the CHNA requirements (e.g., by excluding medically underserved populations, low-income persons, minority groups, or those with chronic disease needs).*

Persons Representing the Community Served

Section 501(r) provides that a CHNA must take into account input from **persons who represent the broad interests of the community** served by the hospital facility, including individuals with special knowledge of or expertise in public health. Under the Notice, the persons consulted must also include: (1) government agencies with current information relevant to the health needs of the community and (2) representatives or members of medically underserved, low-income, and minority populations, and populations with chronic disease needs, in the community. In addition, a hospital organization may seek input from other individuals and organizations located in or serving the hospital facility’s defined community (e.g., health care consumer advocates, academic experts, private businesses, health insurance and managed care organizations, etc).

Required Documentation

The Notice provides that a hospital organization will be required to separately document the CHNA for each of its hospital facilities in a **written report** that includes the following information: 1) a description of the community served by the facility and how the community was determined; 2) a description of the process and methods used to conduct the CHNA; 3) the identity of any and all organizations with which the organization collaborated and third parties that it engaged to assist with the CHNA; 4) a description of how the organization considered the input of persons representing the community (e.g., through meetings, focus groups, interviews, etc.), who those persons are, and their qualifications; 5) a prioritized description of all of the community needs identified by the CHNA and an explanation of the process and criteria used in prioritizing such needs; and 6) a description of the existing health care facilities and other resources within the community available to meet the needs identified through the CHNA.

Making a CHNA Widely Available to the Public

The Notice provides that a CHNA will be considered to be “**conducted**” in the taxable year that the written report of the CHNA findings is made **widely available to the public**. The Notice also indicates that the IRS intends to pattern its rules for making a CHNA “widely available to the public” after the rules currently in effect for Forms 990. *Accordingly, an organization would make a facility’s written report widely available by posting on its website either (1) the report itself, in a readily accessible format, or (2) a link to another organization’s website, along with instructions for accessing the report on that website. The Notice clarifies that an organization must post the CHNA for each facility until the date on which its subsequent CHNA for that facility is posted.*

How and When to Adopt an Implementation Strategy

Section 501(r) requires a hospital organization to adopt an implementation strategy to meet the needs identified through each CHNA. **The Notice defines an “implementation strategy” as a written plan that addresses each of the needs identified in a CHNA by either (1) describing how the facility plans to meet the health need, or (2) identifying the health need as one that the facility does not intend to meet and explaining why the facility does not intend to meet it.** A hospital organization may develop an implementation strategy in collaboration with other organizations, which must be identified in the implementation strategy. As with the CHNA, a hospital organization that operates multiple hospital facilities must have a separate written implementation strategy for each of its facilities.

Under the Notice, an implementation strategy is considered to be “**adopted**” on the date the strategy is approved by the organization’s board of directors or by a committee of the board or other parties legally authorized by the board to act on its behalf. Further, the formal adoption of the implementation strategy must occur by the end of the same taxable year in which the written report of the CHNA findings was made available to the public. For hospital organizations with a June 30 fiscal year end, that effectively means that the organization must complete and appropriately post its first CHNA no later than its fiscal year ending June 30, 2013, and formally adopt a related implementation strategy by the end of the same tax year. *This final requirement may come as a surprise to many charitable hospitals, considering Section 501(r) contains no deadline for the adoption of the implementation strategy.*

Year 2015 - IRS and Treasury Finalize Patient Protection Rules for Tax-

Exempt Hospitals ACCOUNTING TODAY 1/2/15

The Internal Revenue Service and the Treasury Department have issued **final regulations** under the Affordable Care Act to protect patients in tax-exempt hospitals from aggressive debt collection practices and to provide other rules for charitable hospitals.

Under the **final regulations**, each Section 501(c)(3) hospital organization is required to meet four general requirements on a facility-by-facility basis: establish written financial assistance and emergency medical care policies; limit the amounts charged for emergency or other medically necessary care to individuals eligible for assistance under the hospital's financial assistance policy; make reasonable efforts to determine whether an individual is eligible for assistance under the hospital's financial assistance policy before engaging in extraordinary collection actions against the individual; and conduct a community health needs assessment, or CHNA, and adopt an implementation strategy at least once every three years. The first three requirements are effective for tax years beginning after March 23, 2010 and the CHNA requirements are effective for tax years beginning after March 23, 2012.

The ACA also added a new Section 4959, which imposes an excise tax for failure to meet the CHNA requirements, and added reporting requirements. These final regulations provide guidance on the entities that must meet these requirements, the reporting obligations relating to these requirements and the consequences for failing to satisfy the requirements. "Charitable hospitals represent more than half of the nation's hospitals and play a key role in improving the health of the communities they serve," wrote Emily McMahon, Deputy Assistant Secretary for Tax Policy at the U.S. Department of the Treasury, in a **blog post** Monday explaining the requirements. "But reports that some charitable hospitals have used aggressive debt collection practices, including allowing debt collectors to pursue collections in emergency rooms, have highlighted the need for clear rules to protect patients. For hospitals to be tax-exempt, they should be held to a higher standard. That is why the Affordable Care Act included additional consumer protection requirements for charitable hospitals, so that patients are protected from abusive collections practices and have access to information about financial assistance at all tax-exempt hospitals."

She noted that as a condition of their tax-exempt status, charitable hospitals must take an active role in improving the health of the communities they serve, establish billing and collections protections for patients eligible for financial assistance, and provide patients with the information they need to apply for such assistance. "These final rules adopt the same framework of proposed regulations but simplify the compliance process for charitable hospitals, while

continuing to provide meaningful guidance on protections for patients and requirements to assess community health needs,” she added.

Under the new rules, hospitals cannot charge individuals eligible for financial assistance more for emergency or other medically necessary care than the amounts generally billed to patients with insurance (including Medicare, Medicaid, or private commercial insurance). In addition, every tax-exempt hospital must establish and widely publicize a financial assistance policy that clearly describes to patients the eligibility criteria for obtaining financial assistance and the method for applying for financial assistance.

Charitable hospitals are also prohibited from engaging in certain collection methods (for example, reporting a debt to a credit agency or garnishing wages) until they make reasonable efforts to determine whether an individual is eligible for assistance under the hospital’s financial assistance policy.

In addition, each charitable hospital need to conduct and publish a community health needs assessment at least once every three years and disclose on the tax form that it files on an annual basis the steps it is taking to address the health needs identified in the assessment.

Many of the requirements have been in place since the Affordable Care Act passed in 2010, but in response to comments on the proposed regulations, the final rules also expand access to translations for patients, by lowering the threshold for having translations of financial assistance policies available from 10 percent of the community served as proposed, to five percent of the community served or population expected to be encountered by the hospital facility, or 1000 persons, whichever is less, according to McMahon. “The final rules also revise the notification requirements to maintain important protections for patients while making it easier for hospitals to comply with them,” she wrote. “General notifications regarding a hospital’s financial assistance policy must appear on bills and in the hospital. However, individual written and oral notifications of the hospital’s financial assistance policy are now only required when a hospital plans to use extraordinary collections actions, such as reporting a debt to a credit bureau, selling the debt to a third party or garnishing wages.”

While charitable hospitals must continue to make a good-faith effort to comply, the rules provide charitable hospitals with time to fully update their policies and programming to implement the changes. But if a charitable hospital fails to meet the consumer protection provisions required by the law, the hospital could have its tax-exempt status revoked. If a hospital fails to properly conduct a community health needs assessment or adopt an implementation strategy, an excise tax will apply, McMahon noted. “However, if a hospital fails to meet a requirement, but the failure is neither willful nor egregious, the hospital can correct and publicly disclose the error to have it excused, thus avoiding revocation of tax-exempt status, but the excise tax would still apply,” she wrote.

II Methodology

b) Collaborating CHNA Parties

Working together to improve community health takes collaboration. Listed below is an in depth profile of the local hospital & Health Department CHNA Partners:

Ellinwood District Hospital Profile

605 N Main St, Ellinwood, KS 67544
Administrator: Kile Magner

History: A \$75,000 bond issue election passed on March 21, 1951 allowed the board to build the hospital, although donations were necessary to equip the facility. The dedication was held October 19, 1952 and the hospital opened the next day.

It was designed for 24 patients, plus 8 cribs in the nursery. In 1952 a semi-private room cost was \$9.50 a day and a private room was \$14.00. The east wing and Sisters' home (currently Ellinwood Hospital Clinic) was built in 1953. The north Medical Arts building was constructed in 1957. The sisters of St. Joseph, Wichita originally ran the hospital from 1952-1961. Due to financial difficulties the sisters terminated their agreement with Ellinwood District Hospital.

Great Plains Lutheran Hospitals, Inc began operation of the facility on April 1, 1962. A total of 1,211 babies were born from 1952 until deliveries were discontinued in August 1972. Since that time Great Plains was reorganized and renamed GPHA, Inc. There are 5 board members of Ellinwood District Hospital, an average number of employees is 70. The hospital status was changed to Critical Access Hospital in 1998 after being designated a 12-bed Rural Primary Care Hospital.

Today Ellinwood District Hospital is a 25-bed Critical Access Hospital with 2 ER beds and the Facility provides inpatient acute care, skilled swing bed, and intermediate swing bed care. Facility offers numerous outpatient services including 24-hour emergency rooms, full service laboratory, radiology, CT, mobile mammography, mobile US/sonography, mobile MRI, Physical and Occupational therapy for all ages.

Ellinwood District Hospital offers the following services to its community:

- 24-Hour Emergency Room
- Outpatient Procedures
- Physical / Occupational / Speech Therapy
- Full Service Laboratory
- Radiology
- Dietary Services

Barton County Health Department Profile

1300 Kansas Avenue, Great Bend, KS 67530

Administrator: Shelly Schneider

If you've ever

- had a vaccination,
- assumed the water from your tap is safe,
- taken your child to daycare,
- expected the restaurant you eat in to be clean and safe,
- been screened for tuberculosis, high blood pressure, or some other contagious disease,
- wondered how to avoid getting influenza, or
- what to eat to stay healthy,

then you have been touched by the efforts of public health employees.

Public health protects and improves communities by: preventing epidemics and the spread of disease; promoting healthy lifestyles for children and families; protecting against hazards in homes, work, communities and the environment; assuring high quality health care services; and preparing for and responding to emergencies. There is little of daily life not related to or influenced by public health. Public health is everywhere.

PUBLIC HEALTH:

- Prevents epidemics and spread of disease.
- Protects against environmental hazards.
- Prevents injuries.
- Promotes and encourages healthy behaviors.
- Responds to disaster and assists communities in recovery.
- Assures the quality and accessibility of health services.

Hours:

Monday	9:00 am - 4:30 pm
Tuesday	8:00 am - 4:30 pm
Wednesday	8:00 am - 4:30 pm
Thursday	8:00 am - 7:30 pm
Friday	8:00 am - 4:30 pm

Barton County Health Department Services:

Communicable Diseases—Tuberculosis, Sexually Transmitted Diseases, Seasonal Influenza, MRSA, Rabies.

Prevention—Chronic Disease Risk Reduction, Drug & Alcohol Prevention, Suicide Prevention, Be Well Barton County, Central Kansas Breastfeeding Coalition.

Immunizations—Diphtheria, Tetanus and Pertussis, Tatanus, Diphtheria, and Pertussis Booster (TDaP), Polio, MMR, Vericella, Hepatitis A & B, HPV Vaccine, Meningococcal Vaccine, Zostavax Vaccine, Pneumococcal Vaccine.

Emergency Preparedness—Emergency Supplies, Shelter in Place, Biological Agents, Chemical Agents, Radioactive Threats.

Family Planning and Birth Control—Annual Physical Exams and Pap Test, Pregnancy Testing, Counseling in Contraceptive Methods, Contraceptive Supplies, Counseling and Referral for Infertility and Problem Pregnancy, Health Information and Education, School and Community Education Programs, Appropriate Referrals.

Chronic Disease Risk Reduction—Tobacco Use Prevention & Cessation, Improving Nutrition & Access to Healthy Foods, Increasing Physical Activity, Central Kansas Partnership & Task Force.

Child Health—Physical Examination, Lead Screening, Nutritional Counseling, Immunizations, Well Child Physical, WIC Program, Kan-Be-Healthy Exam, Referrals to Other Services.

Maternal and Child Health—Social and educational support for pregnant women and their infants the first year after delivery including: Prenatal Clinics, Prenatal Risk Reduction, Home Visits by a nurse & social worker, Healthy Start Home Visitor Program, Well Child Exams targeting children without access to doctors (up to 5yrs), and KAN BE HEALTHY Assessments for eligible children (required by Medicaid).

WIC-Women, Infants, & Children—Maternal & Infant Health, Healthy Start.

Child Care Licensing—Investigation of child care provider and unlicensed provider complaints, monthly orientation classes, quarterly newsletters.

II. Methodology

b) Collaborating CHNA Parties Continued

Consultant Qualifications



VWV Research & Development, LLC

Company Profile: 601 N. Mahaffie, Olathe, KS 66061 (913) 302-7264

VINCE VANDEHAAR, MBA

Principal Consultant & Owner of VWV Research & Development, LLC

VWV Research & Development, LLC was incorporated on May 28th, 2009. With over 30 years of business & faculty experience in helping both providers, payors, and financial service firms obtain their strategic planning and research & development needs, Vince brings in-depth health industry knowledge, research aptitude, planning expertise and energy. VWV Research & Development services are organized, formal processes of listening to the voice of the customer. Vince started his consulting business after working for Saint Luke's Health System (SLHS) of Kansas City for 16 years. *(Note: Saint Luke's Hospital of Kansas City, SLHS's largest hospital, won the Malcolm Baldrige National Quality Award in March of 2003. The Baldrige examiners cited Vince's department as "Best Practice" in the areas of customer satisfaction, market research and evaluation efforts <Kansas City Star 3/10/04>).*

VWV Research & Development, LLC consultants have in-depth experience helping hospitals work with local Health Departments to engage community residents & leaders to identify gaps between existing health community resources & needs and construct detailed strategies to meet those needs - while still adhering to the hospital's mission and budget. Over the past 20 years, Vandehaar has completed 8 comprehensive Baldrige aligned Community Health Needs Assessments for Saint Luke's of Kansas City System facilities (3 campuses) and was contracted to conduct 2 additional independent Dept. of Health consulting projects (prior to IRS 990 regs). To date, VWV has completed 39 CHNA IRS aligned assessments for Kansas, Iowa and Missouri hospitals & Health Departments.

Vince Vandehaar, MBA is actively involved in the Kansas City community. He is a member the Greater Kansas City Employee Benefits Association, the Society for Healthcare Strategy & Market Development, the American Marketing Association Kansas City Chapter and Co-Chair of the AMA Kansas City Healthcare Special Interest Group. In addition to these roles, from 2000 to 2008, Vince served as the state chairman for MHA's Data Committee and was a member of KHA's Data Taskforce.

Collaborating Consultants

Alexa Backman, MBA 2015 - VWV Research & Development, LLC
Lead Planning & Marketing Analyst

II. Methodology

c) CHNA & Town Hall Research Process

Our Community Health Needs Assessment process began in December of 2014. At that time an inquiry by Hays Medical Center (Hays, KS) to all NW KS Health Alliance Network member hospitals was communicated to explore the possibility of a “group buy” to meet IRS CHNA requirements. (Note: Most NW KS Alliance Network hospitals work closely with Hays Medical Center to provide onsite IT, Telemedicine, Mobile Radiology and Bio-Medical services. In addition, many Hays based specialists will travel to neighboring counties to provide visiting outreach clinics).

In late December of 2014 a meeting was called (hosted) by Hays Medical to learn more from the NW Alliance members (24) regarding their CHNA needs and to review the possible CHNA collaborative options. VVV Research & Development, LLC from Olathe, KS was asked to facilitate this discussion with the following agenda: VVV Research CHNA experience, review CHNA requirements (regulations) and discuss CHNA steps/options to meet IRS requirements and to discuss the next steps.

VVV CHNA Deliverables:

- Uncover/Document basic secondary research – health of county (Organized by 10 TABS)
- Conduct Town Hall meeting to discuss secondary data and uncover/prioritize county health needs
- Conduct & Report CHNA primary Research (valid N) – if elected by client
- Prepare & publish IRS-aligned CHNA report to meet requirements

VVV CHNA Work Plan - Barton County (Combo - Clara Barton/Ellinwood)

Project Timeline & Roles 2015

Step	Date (Start-Finish)	Lead	Task
1	12/11/2014	VVV	Hold Kickoff Northwest Alliance Review.
2	1/1/2015	Hosp	Select CHNA Option A/B/C. Approve (sign) VVV CHNA quote.
3	1/20/2015	VVV	Send out REQCommInvite Excel file. Hosp & Hlth Dept to fill in PSA Stakeholders Names/Address/E-mail.
4	1/20/2015	VVV	Request Hospital Client to send KHA PO reports (PO101, 103 and TOT223E) to document service area for FFY 13, 12 and 11. In addition, request hospital to complete 3 year historical PSA IP/OP/ER/Clinic patient origin file (Use ZipPSA_3yrPOrigin.xls).
5	On or Before 01/28/2015	VVV	Prepare CHNA Round#2 stakeholder feedback "online link." Send text link for hospital review.
6	On or Before 1/28/2015	VVV / Hosp	Prepare/send out PR story to local media announcing upcoming CHNA work (general story). Hospital to place.
7	2/2/2015	VVV	Launch/conduct online survey to stakeholders: Hospital will e-mail invite to participate to all stakeholders.
9	2/11/2015	VVV / Hosp	Prepare/send out PR story to local media CHNA survey announcing "online CHNA Round #2 feedback." Request public to participate.
10	On or Before 2/15/2015	VVV	Assemble & complete secondary research - Find/populate 10 TABS. Create Town Hall Ppt for presentation.
11	2/18/2015	Hosp	Prepare/send out Community TOWN HALL invite letter and place local AD.
12	2/18/2015	VVV / Hosp	Prepare/send out PR story to local media announcing upcoming Town Hall. VVV will mock-up PR release to media sources.
13	3/6/2015	ALL	Conduct conference call (time TBD) with Hospital/Public Hlth to review Town Hall data/flow.
14	3/19/2015	VVV	Conduct CHNA Town Hall. Dinner 5:30-7pm at Conception Parish in Claflin. Review & discuss basic health data plus rank health needs.
15	On or Before 04/30/2015	VVV	Complete analysis - release draft 1- seek feedback from leaders (Hospital & Health Dept).
16	On or Before 05/31/2015	VVV	Produce & release final CHNA report. Hospital will post CHNA online (website).
17	On or Before 05/31/2015	Hosp	Conduct client Implementation Plan PSA leadership meeting.
18	30 Days Prior to End of Hosp Fiscal Year	Hosp	Hold board meetings to discuss CHNA needs, create & adopt an implementation plan. Communicate CHNA plan to community.

To meet IRS aligned CHNA requirements, a four-phase methodology was reviewed and approved as follows:

Phase I – Discovery:

Conduct a 30 minute conference call with CHNA hospital client and County Health Department. Review / confirm CHNA calendar of events, explain / coach client to complete required participants database and schedule / organize all Phase II activities.

Phase II – QUALIFY Community Need:

A) Conduct secondary research to uncover the following historical community health status for PSA. Use Iowa Hospital Association (IHA), Vital Statistics, Robert Woods Johnson County Health Rankings, etc. to document “current state” of county health organized as follows:

TAB 1. Demographic Profile
TAB 2. Economic/Business Profile
TAB 3. Educational Profile
TAB 4. Maternal and Infant Health Profile
TAB 5. Hospitalization / Providers Profile
TAB 6. Behavioral Health Profile
TAB 7. Risk Indicators & Factors
TAB 8. Uninsured Profile
TAB 9. Mortality Profile
TAB 10. Preventative Quality Measures

B) Gather historical primary research to uncover public health needs, practices and perceptions for hospital primary service areas.

Phase III – QUANTIFY Community Need:

Conduct 90 minute Town Hall meeting with required county PSA residents. (Note: At each Town Hall meeting, CHNA secondary data will be reviewed, facilitated group discussion will occur, and a group ranking activity to determine the most important community health needs will be administered).

Phase IV - Complete data analysis & create comprehensive Community Health Needs Assessment:

Post CHNA report findings to meet IRS CHNA criteria.

After consideration of CHNA stakeholders (sponsoring hospital & local health department) the CHNA Basic option was selected with the following project schedule:

Phase I: Discovery.....	January 2015
Phase II: Secondary / Primary Research.....	Jan - Feb 2015
Phase III: Town Hall Meeting.....	March 12, 2015
Phase IV: Prepare / Release CHNA report.....	May 2015

Detail CHNA Development Steps Include:

Steps to Conduct Community Health Needs Assessment	
	Development Steps
Step # 1 Commitment	<i>Determine interest level of area healthcare leaders (Hospital, Health Dept, Mental Health Centers, Schools, Churches, Physicians etc), hold community meeting.</i>
Step # 2 Planning	<i>Prepare brief Community Health Needs Assessment Plan - list goals, objectives, purpose, outcome, roles, community involvement, etc. Hold Community Kick-off meeting.</i>
Step # 3 Secondary Research	<i>Collect & Report Community Health Published Facts. Gather data health practice data from published secondary research sources i.e. census, county health records, behavioral risk factors surveillance, etc.</i>
Step # 4a Primary Research	<i>Conduct Community Roundtable (Qualitative Research). Review Secondary Research (Step3) with Community Stakeholders. Gather current opinions and identify health needs.</i>
Step # 4b Primary Research <Optional>	<i>Collect Community Opinions. (Quantitative Research). Gather current opinions (Valid sample size) regarding community health needs and healthcare practices. If appropriate, conduct Physician Manpower Assessment to determine FTE Physician need by specialty.</i>
Steps # 5 Reporting	<i>Prepare/Present comprehensive Community Health Needs Assessment report (to community leaders) with Recommended Actions to improve health. < Note: Formal report will follow IRS Notice 2011-52 regs ></i>
VVV Research & Development, LLC 913 302-7264	

Overview of Town Hall Community Priority Setting Process

Each community has a wealth of expertise to be tapped for CHNA development. For this reason, a town hall is the perfect forum to gather community insight and provide an atmosphere to objectively consensus build and prioritize county health issues.

All Town Hall priority-setting and scoring processes involve the input of key stakeholders in attendance. Individuals and organizations attending the Town Halls were critically important to the success of the CHNA. The following list outlines partners invited to Town Hall: local hospital, public health community, mental health community, free clinics, community-based clinics, service providers, local residents, community leaders, opinion leaders, school leaders, business leaders, local government, faith-based organizations and persons (or organizations serving them), people with chronic conditions, uninsured community members, low income residents and minority groups.

Clara Barton Hospital's Town Hall was held on Thursday, March 19th, 2015 at Conception Parish in Claflin. Vince Vandelaar and Alexa Backman facilitated this 1 ½ hour session with thirty nine (39) attendees. (Note: a detail roster of Town Hall attendees is listed in Section V a).

The following Town Hall agenda was conducted:

1. Welcome & Introductions
2. Review Purpose for the CHNA Town Hall and Roles in the Process
3. Present / Review of Historical County Health Indicators (10 TABS)
4. Facilitate Town Hall participant discussion of data (probe health strengths / concerns). Reflect on size and seriousness of any health concerns cited and discuss current community health strengths.
5. Engage Town Hall participants to rank health needs (using 4 dots to cast votes on priority issues). Tally & rank top community health concerns cited.
6. Close meeting by reflecting on the health needs / community voting results. Inform participants on "next steps."

At the end of each Town Hall session, VVV encouraged all community members to continue to contribute ideas to both hospital and health department leaders via e-mail or personal conversations.

(NOTE: To review detail Town Hall discussion content, please turn to Section V for detailed notes of session and activity card content reporting of open end comments).

Community Health Needs Assessment Barton County KS Combo -Town Hall Meeting on behalf of Clara Barton & Ellinwood District

Vince Vandehaar, MBA

VVV Marketing & Development LLC
Owner and Adjunct Marketing Professor

[Olathe, Kansas 66061](#)

www.vandehaarmarketing.com
913-302-7264

Community Health Needs Assessment (CHNA) Town Hall Discussion Agenda

- I. Opening / Introductions (10 mins)
- II. Review CHNA Purpose & Process (10 mins)
- III. Review Current County "Health Status" – -
Secondary Data by 10 TAB Categories
Review Community Feedback Research (35 mins)
- IV. Collect Community Health Perspectives Hold
Community Voting Activity: Determine MOST Important Health
areas. (30 mins)
- V. Close / Next Steps (5 mins)

VVV Marketing & Development INC.

I. Introduction:

Background and Experience



Vince Vandehaar MBA,
VVV Marketing & Development INC Principal Consultant, Olathe,
KS 913 302-7264

➤ – Professional Consulting Services: Strategic Planning, Marketing
Management, Business Research & Development Focus : Strategy ,
Research , Deployment

➤ – Over 25 years of experience with Tillinghast, BCBSKC, Saint Luke's

Adjunct Professor - Marketing / Health Admin.- 26 years +

➤ Webster University (1988 – present)

➤ Rockhurst University (2010 – present)

Alexa Backman MBA 2015, VVV Collaborative Analyst

Town Hall Participation (You)

- ALL attendees welcome to share.
 - Parking Lot
- There are no right or wrong answers.
- Only one person speaks at a time.
- Please give truthful responses.
- Have a little fun along the way.

I. Introductions: a conversation with the community. Community members and organizations invited to CHNA Town Hall

Consumers: Uninsured/underinsured people, Members of at-risk populations, Parents, caregivers and other consumers of health care in the community, and Consumer advocates.

Community leaders and groups: The hospital organization's board members, Local clergy and congregational leaders, Presidents or chairs of civic or service clubs -- Chamber of Commerce, veterans' organizations, Lions, Rotary, etc., Representatives from businesses -- owners/CEO's of large businesses (local or large corporations with local branches), Business people & merchants (e.g., who sell tobacco, alcohol, or other drugs), Representatives from organized labor, Political, appointed and elected officials, Foundations, United Way organizations. And other "community leaders."

Public and other organizations: Public health officials, Directors or staff of health and human service organizations, City/Community planners and development officials, Individuals with business and economic development experience, Welfare and social service agency staff, Housing advocates - administrators of housing programs: homeless shelters, low-income family housing and senior housing, Education officials and staff - school superintendents, principals and teachers, Public safety officials, Staff from state and area agencies on aging, Law enforcement agencies - Chiefs of police, Local colleges and universities, Coalitions working on health or other issues.

Other providers: Physicians, Leaders in other not-for-profit health care organizations, such as hospitals, clinics, nursing homes and home-based and community-based services, Leaders from Catholic Charities and other faith-based service providers, Mental health providers, Oral health providers, Health insurers, Parish and congregational nursing programs, Other health professionals

II. Purpose: Why conduct Community Health Needs Assessment?

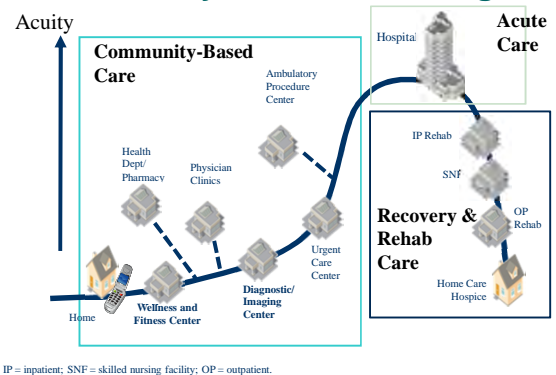
- To determine health-related trends and issues of the community.
- To understand/evaluate health delivery programs in place.
- To develop strategies to address unmet health needs.
- To meet Federal requirements -- both local hospital & Health Department.

II. Review CHNA Definition

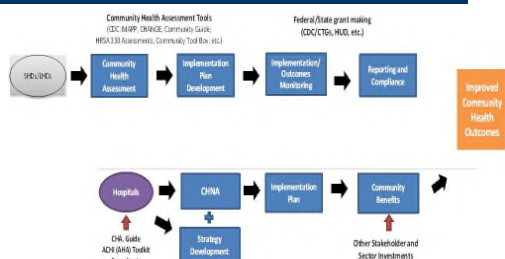
A Community Health Needs Assessment (CHNA) is a systematic collection, assembly, analysis, and dissemination of information about the health of the community. *<NOTE: Some the data has already been collected (published) by local, state and federal public health organizations. Some data will be collected today.>*

CHNA's role is to identify factors that affect the health of a population and determine the availability of resources to adequately address those factors.

Future System of CARE Sg2



Community Health Needs Assessment Joint Process: Hospital & Health Department



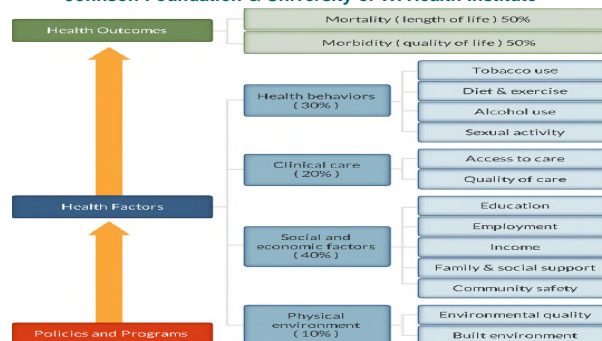
II. Required Written Report IRS 990 Documentation

- a description of the community served
- a description of the CHNA process
- the identity of any and all organizations & third parties which collaborated to assist with the CHNA;
- a description of how the organization considered the input of persons representing the community (e.g., *through meetings, focus groups, interviews, etc.*), who those persons are, and their qualifications;
- a **prioritized description of all of the community needs identified by the CHNA and**
- a description of the existing health care facilities and other resources within the community available to meet the needs identified through the CHNA.

III. Review Current County "Health Status" – Secondary Data by 10 TAB Categories plus RWJ State Rankings

TAB 1. Demographic Profile
TAB 2. Economic/Business Profile
TAB 3. Educational Profile
TAB 4. Maternal and Infant Health Profile
TAB 5. Hospitalization / Providers Profile
TAB 6. Behavioral Health Profile
TAB 7. Risk Indicators & Factors
TAB 8. Uninsured Profile
TAB 9. Mortality Profile
TAB 10. Preventative Quality Measures

County Health Rankings Robert Wood Johnson Foundation & University of WI Health Institute



1 Physical Environment (10%)		
Focus Area	Measure	Description
Air and water quality (5%)	Air pollution - particulate matter	The average daily measure of fine particulate matter in micrograms per cubic meter (PM2.5) in a county
	Drinking water violations	Percent of population potentially exposed to water exceeding a violation level during the past year
	Severe housing problems	Percent of households with at least 1 of 4 housing problems: overcrowding, high housing costs, or lack of hot water or plumbing facilities
Housing and transit (5%)	Driving alone to work	Percent of the workforce that drives alone to work
	Long commutes - driving alone	Among workers who commute in their car alone, the percent that commute more than 30 minutes
2 Clinical Care (20%)		
Focus Area	Measure	Description
Access to care (10%)	Uninsured	Percent of population under age 65 without health insurance
	Primary care physicians	Ratio of population to primary care physicians
	Dentists	Ratio of population to dentists
	Mental health providers	Ratio of population to mental health providers
Quality of care (10%)	Preventable hospital stays	Hospitalization rate for ambulatory care sensitive conditions per 1,000 Medicare enrollees
	Diabetic screening	Percent of diabetic Medicare enrollees that receive HbA1c screening
	Mammography screening	Percent of female Medicare enrollees that receive mammography screening
2b Social and Economic Environment (40%)		
Focus Area	Measure	Description
Education (10%)	High school graduation	Percent of ninth grade cohort that graduates in 4 years
	Some college	Percent of adults aged 25-44 years with some post-secondary education
Employment (10%)	Unemployment	Percent of population age 16+ unemployed but seeking work
Income (10%)	Children in poverty	Percent of children under age 18 in poverty
Family and social support (5%)	Inadequate social support	Percent of adults without social/emotional support
	Children in single-parent households	Percent of children that live in household headed by single parent
3 Social and Economic Environment (40%)		
Focus Area	Measure	Description
Community safety (5%)	Violent crime	Violent crime rate per 100,000 population
	Injury deaths	Injury mortality per 100,000
3 Health Outcomes (30%)		
Focus Area	Measure	Description
Tobacco use (5%)	Adult smoking	Percent of adults that report smoking >= 100
	Adult obesity	Percent of adults that report a BMI >= 30
Diet and exercise (10%)	Food environment index	Index of factors that contribute to a healthy food environment
	Physical inactivity	Percent of adults aged 20 and over reporting
Alcohol and drug use (5%)	Access to exercise opportunities	Percent of the population with adequate access to locations for physical activity
	Excessive drinking	Single plus heavy drinking
Sexual activity (5%)	Alcohol-impaired driving deaths	Percent of driving deaths with alcohol involvement
	Teen birth rate	Chlamydia rate per 100,000 population, ages 15-19
3b / 3c Mortality / Morbidity		
Focus Area	Measure	Description
Quality of life (50%)	Poor or fair health (age-adjusted)	Percent of adults reporting fair or poor health (age-adjusted)
	Poor physical health days (age-adjusted)	Average number of physically unhealthy days reported in past 30 days (age-adjusted)
Length of life (50%)	Poor mental health days (age-adjusted)	Average number of mentally unhealthy days reported in past 30 days (age-adjusted)
	Low birthweight	Percent of live births with low birthweight (< 5500 grams)
	Premature death	Years of potential life lost before age 75 per 100,000 population (age-adjusted)

IV. Collect Community Health Perspectives

Ask your opinion. Your thoughts?

- 1) **Tomorrow:** What is occurring or might occur *that would affect the "health of our community" ?*
- 2) **Today:** What are the strengths of our community that contribute to health
- 3) **Today:** Are there healthcare services in your community / neighborhood that you feel need to be improved and / or changed?

V. Have we forgotten anything ?

- | | |
|---|--|
| <ul style="list-style-type: none"> A. Aging Services B. Chronic Pain Management C. Dental Care/Oral Health D. Developmental Disabilities E. Domestic Violence, F. Early Detection & Screening G. Environmental Health H. Exercise I. Family Planning J. Food Safety K. Health Care Coverage L. Health Education M. Home Health | <ul style="list-style-type: none"> N. Hospice O. Hospital Services P. Maternal, Infant & Child Health Q. Nutrition R. Pharmacy Services S. Primary Health Care T. Public Health U. School Health V. Social Services W. Specialty Medical Care Clinics X. Substance Abuse Y. Transportation Z. Other _____ |
|---|--|

Community Health Needs Assessment

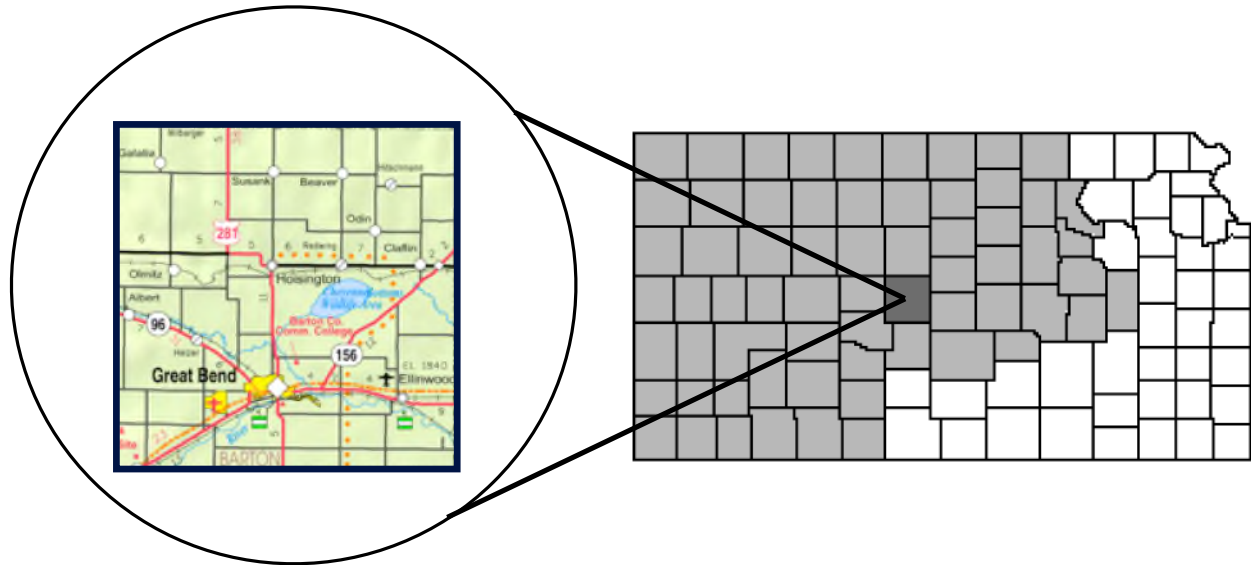
Questions Next Steps ?

VVV Research & Development INC.
vmlvandehaar@aol.com
 913 302-7264

II. Methodology

d) Community Profile (A Description of Community Served)

Barton County Community Profile



Demographics

The population of Barton County was estimated to be 27,861 citizens in 2014, and only had a 0.16% change in population from 2010–2014. The county covers 895.4 square miles and this area includes the Cheyenne Bottoms Wildlife Area and Wildlife National Scenic Byway¹. The county has an overall population density of 31 persons per square mile. The county is located in Central/Western Kansas and education, health and social services, retail trade and manufacturing are the major contributors to its economy. The county was founded in 1872 and the county seat is Great Bend².

The major highway transportation access to Barton County is U.S. Interstate 70, which runs north of the county. Kansas Highway 4 runs East-West and State Highway 281 is the major North-South highway. Also, State Highways 56,156 and 281 connect the larger cities in the county.

Barton County KS Airports³

Name	USGS Topo Map
Button Airport	Ellinwood NW
Ellinwood Municipal Airport	Ellinwood
Great Bend Municipal Airport	Great Bend

¹ <http://kansas.hometownlocator.com/ks/barton/>

² http://www.city-data.com/county/Barton_County-KS.html

³ <http://kansas.hometownlocator.com/features/cultural,class,airport,scfips,20009.cfm>

Schools in Barton County:

*Public Schools*⁴

Name	Level
Claflin Elem	Primary
Claflin Junior/Senior High	High
Eisenhower Elem	Primary
Ellinwood Middle School	Middle
Ellinwood Elem	Primary
Ellinwood High	High
Great Bend High School	High
Great Bend Middle School	Middle
Hoisington High	High
Hoisington Middle	Middle
Jefferson Elem	Primary
Lincoln Elem	Primary
Lincoln Elementary	Primary
Park Elem	Primary
Riley Elem	Primary
Roosevelt Elementary	Primary

*Private Schools*⁵

Name	Level
Central Kansas Christina Academy	Elementary
Great Bend Sda School	Elementary
Holy Family School	Elementary
St. Joseph Elementary School	Elementary

⁴ <http://kansas.hometownlocator.com/schools/sorted-by-county,n,barton.cfm>

⁵ <http://kansas.hometownlocator.com/schools/sorted-by-county,n,barton.cfm>

Detail Demographic Profile

ZIP	NAME	County	Population:		Chg	Households		HH	Per Capita
			Yr2014	Yr2019		Yr2014	Yr2019	Avg Size	Income 14
67511	Albert	BARTON	24,656	25,349	2.8%	10,405	10,732	2.3	\$23,841
67525	Claflin	BARTON	80	82	2.5%	40	41	2.0	\$32,491
67526	Ellinwood	BARTON	2,720	2,784	2.4%	1,159	1,191	2.3	\$22,562
67530	Great Bend	BARTON	74	76	2.7%	30	30	2.5	\$22,029
67544	Hoisington	BARTON	1,797	1,875	4.3%	735	770	2.3	\$22,651
67564	Olmitz	BARTON	50	51	2.0%	26	27	1.9	\$33,325
67567	Pawnee Rock	BARTON							
Totals			29,377	30,217	16.7%	12,395	12,791	2.2	\$26,150

ZIP	NAME	County	Population 2014:		KIDS<18	GenY	YR 2014		Females
			Yr2014	POP65p			MALES	FEMALES	Age20 35
67511	Albert	BARTON	24,656	3,292	6,137	9,778	12,324	12,332	3,550
67525	Claflin	BARTON	80	15	19	21	42	38	5
67526	Ellinwood	BARTON	2,720	461	677	801	1,325	1,395	241
67530	Great Bend	BARTON	74	13	17	19	39	35	5
67544	Hoisington	BARTON	1,797	360	437	514	921	876	130
67564	Olmitz	BARTON	50	8	14	13	26	24	3
67567	Pawnee Rock	BARTON							
Totals			29,377	4,149	7,301	11,146	14,677	14,700	3,934

ZIP	NAME	County	Population 2014:		Amer IN	Hisp	Aver	Hholds	
			White	Black			HH Inc14	Yr2014	HH \$50K+
67511	Albert	BARTON	22,600	372	80	1,546	\$55,998	10,405	4,399
67525	Claflin	BARTON	77	0	0	1	\$64,983	40	22
67526	Ellinwood	BARTON	2,653	8	3	92	\$52,705	1,159	479
67530	Great Bend	BARTON	71	0	1	3	\$54,337	30	12
67544	Hoisington	BARTON	1,757	7	7	20	\$54,806	735	338
67564	Olmitz	BARTON	49	0	0	1	\$64,086	26	14
67567	Pawnee Rock	BARTON							
Totals			27,207	387	91	1,663	\$57,819	12,395	5,264

Source: ERSA Demographics

III. Community Health Status

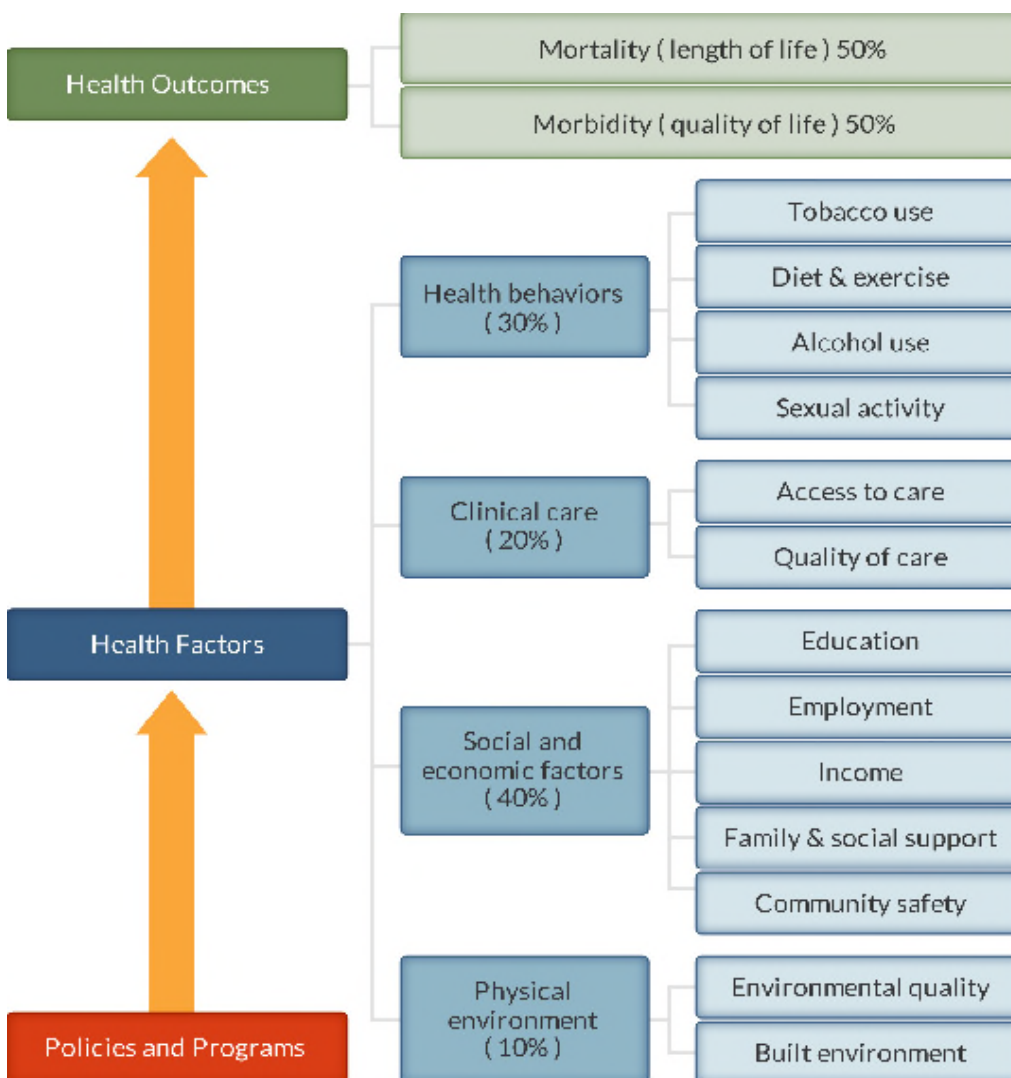
[VVV Research & Development, LLC]

III. Community Health Status

a) Historical Health Statistics

Health Status Profile

This section of the CHNA reviews published quantitative community health indicators and results of our recent CHNA Town Hall. To produce this profile, VVV Research & Development staff analyzed data from multiple sources. This analysis focuses on a set of published health indicators organized by ten areas of focus (10 TABS), results from the 2015 County Health Rankings and conversations from Town Hall primary research. (Note: The Robert Wood Johnson Foundation collaborates with the University of Wisconsin Population Health Institute to release annual *County Health Rankings*. As seen below in model, these rankings are based on a number of health factors).



County Health Rankings model ©2012 UWPHI

Secondary Research

2015 State Health Rankings for Barton County, KS

#	Kansas 2015 County Health Rankings (105 counties)	Definitions	BARTON CO 2015	Trend	NW Alliance (12)
1	Physical Environment	Environmental quality	58		50
2	Health Factors		58		26
2a	Clinical Care	Access to care / Quality of Care	55		41
2b	Social & Economic Factors	Education, Employment, Income, Family/Social support, Community Safety	66		29
3	Health Outcomes		68		44
3a	Health Behaviors	Tobacco Use, Diet/Exercise, Alcohol Use, Sexual Activitiy	41		34
3b	Morbidity	Quality of life	80		48
3c	Mortality	Length of life	49		42
	OVERALL RANK		68		44
NW KS Norms include the following 12 counties: Barton, Ellis, Gove, Kiowa, Norton, Osborne, Pawnee, Phillips, Russell, Sheridan, Smith and Thomas					
http://www.countyhealthrankings.org					

When considering the state of community health, it's important to review published health data by topic area. Below is a summary of key TABS of information collected:

Tab 1 Demographic Profile

TAB		Health Indicator	BARTON CO 2015	TREND	KANSAS	NW Alliance (12)	SOURCE
1a	a	Population, 2013 estimate	27,509		2,895,801	104,831	People Quick Facts
1a	b	Population, 2010	27,674		2,853,118	104,876	People Quick Facts
1a	c	Pop Growth % - April 1,10 to July 1, 13	-0.60%		2.1%	-0.5%	People Quick Facts
1a	d	Persons under 5 years, percent, 2013	6.8%		6.9%	6.0%	People Quick Facts
1a	e	Persons under 18 years, percent, 2013	24.5%		21.8%	22.1%	People Quick Facts
1a	f	Persons 65 years and over, percent, 2013	17.0%		13.6%	20.4%	People Quick Facts
1a	g	Female persons, percent, 2013	50.5%		49.7%	49.2%	People Quick Facts
1a	h	White alone, percent, 2013 (a)	95.4%		95.6%	95.4%	People Quick Facts
1a	i	Black or African American alone,% 2013 (a)	1.8%		1.0%	1.7%	People Quick Facts
1a	j	Hispanic or Latino, percent, 2013 (b)	14.1%		5.4%	5.2%	People Quick Facts
1a	k	Foreign born persons, percent, 2008-2012	6.7%		2.6%	2.1%	People Quick Facts
1a	l	% Language other than English spoken at home	12.7%		7.6%	4.7%	People Quick Facts
1a	m	% Living in same house 1 year +, 2008-2012	85.4%		75.8%	86.6%	People Quick Facts
1a	n	People 65+ Living Alone, 2009-2013	34.4%		29.4%	32.4%	American Community Survey

TAB		Health Indicator	BARTON CO 2015	TREND	KANSAS	NW Alliance (12)	SOURCE
1b	a	Veterans, 2008-2012	1,974		NA	18,731	People Quick Facts
1b	b	Population per square mile, 2010	90		31.6	17	Geography Quick Facts
1b	c	Violent crime rate (Rate of Violent Crime per 1,000)	4.0%		3.5%	2.1%	Kansas Bureau of Investigation
1b	d	Children in single-parent households	23%		NA	29%	County Health Rankings
1b	e	People Living Below Poverty Level, 2009-2013	13.9%		13.7%	12.5%	American Community Survey
1b	f	Children Living Below Poverty Level, 2009-2013	18.3%		18.7%	18.1%	American Community Survey
1b	g	Limited access to healthy foods	8%		NA	8%	County Health Rankings
1b	h	People 65+ Living Below Poverty Level, 2009-2013	9.5%		7.6%	8.5%	American Community Survey
1b	i	People 65+ with Low Access to a Grocery Store, 2010	3.6%		NA	9.5%	Agriculture - Food Environment Atlas
1b	j	Voter Turnout, 2012	61.2%		66.8%	71.0%	Kansas Secretary of State

Tab 2 Economic Profiles

TAB	Health Indicator	BARTON CO 2015	TREND	KANSAS	NW Alliance (12)	SOURCE
2a a	Households, 2008-2012	11,310		1,110,440	42,866	People Quick Facts
2a b	Median household income, 2009-2013	\$44,981		\$51,332	\$44,017	American Community Survey
2a c	Per capita money income in past 12 months (2012 dollars), 2008-2012	\$25,463		\$24,625	\$25,046	People Quick Facts
2a d	Households with Cash Public Assistance Income, 2009-2013	1.7%		2.3%	1.6%	American Community Survey
2a e	Housing units, 2013	12,576		NA	106,387	People Quick Facts
2a f	Median value of owner-occupied housing units, 2008-2012	\$73,600		\$134,700	\$75,775	People Quick Facts
2a g	Homeownership rate, 2009-2013	64.8%		60.7%	62.6%	American Community Survey
2a h	Housing units in multi-unit structures, % 2008-2012	9.3%		23.4%	9.0%	People Quick Facts
2a i	Persons per household, 2008-2012	2.39		2.3	2.3	People Quick Facts
2a j	Severe Housing Problems, 2006-2010	8.2%		12.8%	8.5%	County Health Rankings
2a k	Homeowner Vacancy Rate, 2009-2013	1.9%		2.0%	1.8%	American Community Survey
2a l	Renters Spending 30% or More of Household Income on Rent, 2009-2013	35.8%		45.5%	37.0%	American Community Survey

TAB	Health Indicator	BARTON CO 2015	TREND	KANSAS	NW Alliance (12)	SOURCE
2b a	Retail sales per capita, 2007	\$12,254		\$18,264	\$9,577	Business Quick Facts
2b b	Total number of firms, 2007	3,046		237,040	10,781	Business Quick Facts
2b c	Unemployed Workers in Civilian Labor Force, 2014	2.9%		3.9%	2.7%	U.S. Bureau of Labor Statistics
2b d	Private nonfarm employment, percent change, 2011-2012	17.5%		4.6%	5.3%	Business Quick Facts
2b e	Households with No Car and Low Access to a Grocery Store, 2010	1.4%			2.1%	Agriculture - Food Environment Atlas
2b f	Child Food Insecurity Rate, 2012	22.3%		22.5%	20.8%	Feeding America
2b g	Grocery Store Density, 2011	0.1%			0.4%	Agriculture - Food Environment Atlas
2b h	Low-Income and Low Access to a Grocery Store, 2010	7.6%			15.4%	Agriculture - Food Environment Atlas
2b i	Low-Income Persons who are SNAP Participants, 2007	19.8%			12.3%	Agriculture - Food Environment Atlas
2b j	Households without a Vehicle, 2009-2013	4.8%		5.3%	4.2%	American Community Survey
2b k	Mean travel time to work (minutes), workers age 16+, 2008-2012	15.3		12.7	14	People Quick Facts
2b l	Solo Drivers with a Long Commute, 2008-2012	11.4%		19.5%	12.2%	County Health Rankings
2b m	Workers who Walk to Work, 2009-2013	2.9%		2.4%	4.6%	American Community Survey

Tab 3 Public Schools Health Delivery Profile

Currently school districts are providing on site primary health screenings and basic care.

TAB	Health Indicator	BARTON CO 2015	TREND	KANSAS	NW Alliance (12)	SOURCE
3 a	Students Eligible for the Free Lunch Program, 2011-2012	49.7%		38.9%	34.2%	National Center for Education Statistics
3 b	Poverty Status by School Enrollment, 2009-2013	11.3%		12.9%	12.6%	American Community Survey
3 c	Student-to-Teacher Ratio (% Student / Teacher), 2011-2012	11.8		13	9.4	National Center for Education
3 d	High School Graduation, 2013	87.4%		85.8%	84.6%	Annie E. Casey Foundation
3 e	Bachelor's degree or higher, percent of persons age 25+, 2008-2012	18.4%		32.1%	20.5%	People Quick Facts

#	Indicators	Barton CO 2012	Hoisington District 2014	Ellinwood District 2014	Great Bend District 2014	TREND
1	Total # Public School Nurses	5	2	1	NA	
2	School Nurse is part of the IEP team Yes/No	2 Yes; 3 No	Yes	No	NA	
3	School Wellness Plan (Active)	2 Yes; 3 No	No	No	NA	
4	VISION: # Screened / Referred to Prof / Seen by Professional	1997 / 79 / 28	396 / 22 / 16	149 / 10 / 3	NA	
5	HEARING: # Screened / Referred to Prof / Seen by Professional	1999 / 29 / 5	396 / 13 / 4	154 / 4 / 0	NA	
6	ORAL HEALTH: # Screened / Referred to Prof / Seen by Professional	474 / 79 / 2	622 / 74 / 0	NA	NA	
7	SCOLIOSIS: # Screened / Referred to Prof / Seen by Professional	0 / 0 / 0	NA	NA	NA	
8	# of Students served with no identified chronic health concerns	3355	732	376	NA	
9	School has a suicide prevention program	No	No	No	NA	
10	Compliance on required vaccinations (%)	96%	98%	100%	NA	

TAB 4 Maternal and Infant Health Profile

Tracking maternal & infant care patterns are vital in understanding the foundation of family health.

#	Criteria - Vital Statistics	BARTON CO 2015	Trend	KANSAS	NW Alliance (12)
a	Total Live Births, 2008	383		41,815	1,293
b	Total Live Births, 2009	366		41,388	1,317
c	Total Live Births, 2010	355		40,439	1,274
d	Total Live Births, 2011	379		39,628	1,315
e	Total Live Births, 2012	401		40,304	1,370
f	Total Live Births, 2008-2012 - Five year Rate (%)	13.7		14.5%	11.5%

TAB	Health Indicator	BARTON CO 2015	TREND	KANSAS	NW Alliance (12)	SOURCE
4 a	Percent of Births Where Prenatal Care began in First Trimester, 2011-2013	75.0%		78.4%	78.9%	Kansas Department of Health and Environment
4 b	Percentage of Premature Births, 2011-2013	9.6%		9.0%	8.9%	Kansas Department of Health and Environment
4 c	Percent of Births with Low Birth Weight, 2011-2013	6.0%		7.1%	7.6%	Kansas Department of Health and Environment
4 d	Percent of births Where Mother Smoked During Pregnancy, 2010-2012	NA		13.5%	NA	Kansas Department of Health and Environment
4 e	Percent of all Births Occurring to Teens (15-19), 2011-2013	10.5%		8.1%	7.6%	Kansas Department of Health and Environment
4 f	Percent of Births Occurring to Unmarried Women, 2011-2013	46.6%		36.7%	31.3%	Kansas Department of Health and Environment
4 g	Average Monthly WIC Participation per 1,000 population, 2013	28.8%		23.6%	20.9%	Kansas Department of Health and Environment
4 h	Percent of WIC Mothers Breastfeeding Exclusively, 2013	10.4%		12.9%	14.6%	Kansas Department of Health and Environment

TAB 5 Hospitalization/Provider Profile

Understanding provider access and disease patterns are fundamental in healthcare delivery. Listed below are several vital county statistics.

#	KS Hospital Assoc PO103	Barton County KS IP			TREND
		FFY2012	FFY2013	FFY2014	
1	Total Discharges	1692	1620	1611	
2	Total IP Discharges-Age 0-17 Ped	83	77	79	
3	Total IP Discharges-Age 18-44	181	164	165	
4	Total IP Discharges-Age 45-64	430	434	378	
5	Total IP Discharges-Age 65-74	263	310	272	
6	Total IP Discharges-Age 75+	513	394	421	
7	Psychiatric	66	74	60	
8	Obstetric	76	88	120	
9	Surgical %	29.8%	31.1%	29.5%	
#	KS Hospital Assoc PO103	Ellinwood Disrict Hospital Only			TREND
		FFY2012	FFY2013	FFY2014	
1	Total Discharges	124	129	115	
2	Total IP Discharges-Age 0-17 Ped	4	9	5	
3	Total IP Discharges-Age 18-44	8	9	6	
4	Total IP Discharges-Age 45-64	27	24	17	
5	Total IP Discharges-Age 65-74	22	23	26	
6	Total IP Discharges-Age 75+	56	52	56	
7	Psychiatric	7	12	5	
8	Obstetric	0	0	0	
9	Surgical %	0.8%	NA	NA	
#	Kansas Hospital AssocOP TOT223E	FFY2012	FFY2013	FFY2014	TREND
2	ER Market Share	13.3%	16.1%	15.5%	
4	OPS Market Share	18.2%	18.5%	19.9%	
6	Total OP Market Share	10.6%	10.0%	10.8%	

TAB 5 Hospitalization/Provider Profile

TAB		Health Indicator	BARTON CO 2015	TREND	KANSAS	NW Alliance (12)	SOURCE
5	a	Ratio of Population to Primary Care Physicians, 2013	1958		1816	2114	Kansas Department of Health and Environment
5	b	Staffed Hospital Bed Ratio (per 1,000 Pop), 2012	2.9%		3.4%	13.1%	Kansas Hospital Association
5	c	Percent of Births with Inadequate Birth Spacing, 2011-2013	9.6%		11.0%	10.8%	Kansas Department of Health and Environment
5	d	Preventable hospital stays	79		NA	64	County Health Rankings
5	e	Heart Disease Hospital Admission Rate, 2009-2011	232		300	262	Kansas Department of Health and Environment
5	f	Congestive Heart Failure Hospital Admission Rate, 2009-2011	134		199	191	Kansas Department of Health and Environment
5	g	Chronic Obstructive Pulmonary Disease (COPD) Hospital Admission Rate, 2009-2011	135		136	194	Kansas Department of Health and Environment
5	h	Bacterial Pneumonia Hospital Admission Rate, 2009-2011	319		269	488	Kansas Department of Health and Environment
5	i	Injury Hospital Admission Rate, 2009-2011	634		915	691	Kansas Department of Health and Environment

TAB 6 Social & Rehab Services Profile

Behavioral health care provide another important indicator of community health status.

TAB		Health Indicator	BARTON CO 2015	TREND	KANSAS	NW Alliance (12)	SOURCE
6	a	Depression: Medicare Population, 2012	14.3%		16.2%	15.2%	Centers for Medicare & Medicaid Services
6	b	Alcohol-Impaired Driving Deaths, 2008-2012	28.6%		34.7%	36.4%	County Health Rankings
6	c	Inadequate social support	16%		NA	16%	County Health Rankings
6	d	Poor mental health days	3.1		NA	2.8	County Health Rankings

TAB 7 Health Risk Profiles

Knowing community health risk factors and disease patterns can aid in the understanding “next steps” to improve health. Being overweight/obese; smoking, drinking in excess, not exercising etc can lead to poor health.

TAB	Health Indicator	BARTON CO 2015	TREND	KANSAS	NW Alliance (12)	SOURCE
7a a	% of Adults with High Cholesterol, 2013	40%		38.1%	41.0%	Kansas Department of Health and Environment
7a b	Adult obesity	34%		30%	30%	County Health Rankings
7a c	Percent of Adults Who are Binge Drinkers, 2013	11.4%		15.4%	16.7%	Kansas Department of Health and Environment
7a d	Percent of Adults Who Currently Smoke Cigarettes, 2013	23.9%		20.0%	22.0%	Kansas Department of Health and Environment
7a e	% of Adults with Diagnosed Hypertension, 2013	34.8%		31.3%	31.7%	Kansas Department of Health and Environment
7a f	% of Adults with Doctor Diagnosed Arthritis, 2013	21.8%		23.9%	23.3%	Kansas Department of Health and Environment
7a g	% Physical inactivity	29.0%		NA	25.0%	County Health Rankings
7a h	% of Adults with Fair or Poor Self-Perceived Health Status, 2013	14.0%		15.4%	12.4%	Kansas Department of Health and Environment
7a i	Public Water Supply - Percent of Population Served Unaffected by SDWA	100.0%		99.7%	96.2%	Kansas Department of Health and Environment
7a j	Sexually transmitted infections	313		NA	369	County Health Rankings

TAB	Health Indicator	BARTON CO 2015	TREND	KANSAS	NW Alliance (12)	SOURCE
7b a	Hypertension: Medicare Population, 2012	59.9%		52.7%	55.2%	Centers for Medicare & Medicaid Services
7b b	Hyperlipidemia: Medicare Population, 2012	42.1%		39.3%	38.1%	Centers for Medicare & Medicaid Services
7b c	Rheumatoid Arthritis: Medicare Population, 2012	29.8%		27.7%	33.5%	Centers for Medicare & Medicaid Services
7b d	Ischemic Heart Disease: Medicare Population, 2012	27.2%		26.7%	29.7%	Centers for Medicare & Medicaid Services
7b e	Diabetes: Medicare Population, 2012	26.6%		24.6%	23.0%	Centers for Medicare & Medicaid Services
7b f	Heart Failure: Medicare Population, 2012	14.0%		14.0%	18.3%	Centers for Medicare & Medicaid Services
7b g	Chronic Kidney Disease: Medicare Population, 2012	13.2%		13.9%	13.1%	Centers for Medicare & Medicaid Services
7b h	COPD: Medicare Population, 2012	13.5%		11.0%	12.9%	Centers for Medicare & Medicaid Services
7b i	Alzheimer's Disease or Dementia: Medicare Pop 2012	8.2%		9.9%	10.6%	Centers for Medicare & Medicaid Services
7b j	Atrial Fibrillation: Medicare Population, 2012	8.2%		8.0%	9.3%	Centers for Medicare & Medicaid Services
7b k	Cancer: Medicare Population, 2012	10.3%		8.0%	9.1%	Centers for Medicare & Medicaid Services
7b l	Osteoporosis: Medicare Population, 2012	7.9%		6.1%	8.2%	Centers for Medicare & Medicaid Services
7b m	Asthma: Medicare Population, 2012	4.3%		3.8%	3.5%	Centers for Medicare & Medicaid Services
7b n	Stroke: Medicare Population, 2012	2.4%		3.2%	2.6%	Centers for Medicare & Medicaid Services

TAB 8 Uninsured Profiles

Based on state estimations, the number of insured is documented below. Also, the amount of charity care (last 3 years of free care) from area providers is trended below.

TAB	Health Indicator	BARTON CO 2015	TREND	KANSAS	NW Alliance (12)	SOURCE
8	a	Uninsured Adult Population Rate, 2012	20.9%	17.6%	17.4%	U.S. Census Bureau

#	Charity Care	YR 2012	YR 2013	Yr 2014	TREND
1	Clara Barton Hospital	\$440,613	\$397,626	\$417,242	
2	Ellinwood District Hospital	\$36,369	\$ 29,467	\$ 42,014	

TAB 9 Mortality Profile

The leading causes of county deaths are listed below. Areas of higher than expected are so noted.

Causes of Death by County of Residence, KS 2012	BARTON CO 2015	Trend	KANSAS	NW Alliance (12)
TOTAL	549		43,262	2,013
Major Cardiovascular Diseases	88		7,458	341
All Malignant Neoplasms	83		5,406	256
Diseases of Heart	71		5,314	259
All Other Causes	52		4,215	194
Ischemic Heart Disease	42		2,990	156
Other Heart Diseases	26		2,156	100
Malignant Neoplasms of Resp and Intrathoracic Organs	22		1,537	72
Chronic Lower Respiratory Diseases	16		1,680	75
Malignant Neoplasms of Digestive Organs	16		1,288	51
Other Malignant Neoplasms	15		1,145	48
Alzheimer's Disease	13		788	42
Cerebrovascular Diseases	12		1,331	53
Malignant Neoplasms of Breast	11		400	27
Motor Vehicle Accidents	11		410	33
Malignant Neoplasms of Genital Organs	9		500	24
Pneumonia and Influenza	9		621	37
Suicide	8		505	27

TAB 9 Mortality Profile

TAB	Health Indicator	BARTON CO 2015	TREND	KANSAS	NW Alliance (12)	SOURCE
9 a	Life Expectancy for Females, 2010	81		81	81	Institute for Health Metrics and Evaluation
9 b	Life Expectancy for Males, 2010	77		76	76	Institute for Health Metrics and Evaluation
9 c	Infant Mortality Rate, 2009-2013	7.0%		6.4%	3.9%	Kansas Department of Health and Environment
9 d	Age-adjusted Mortality Rate per 100,000 population, 2011-2013	783		757	740	Kansas Department of Health and Environment
9 e	Age-Adjusted Years of Potential Life Lost Traffic Injury, 2011-2013	1629		490	1541	Kansas Department of Health and Environment
9 f	Age-adjusted Cancer Mortality Rate per 100,000 population, 2011-2013	175		166	148	Kansas Department of Health and Environment
9 g	Age-adjusted Heart Disease Mortality Rate per 100,000 population, 2011-2013	186		156	166	Kansas Department of Health and Environment
9 h	Age-adjusted Chronic Lower Respiratory Disease Mortality Rate per 100,000	51		51	51	Kansas Department of Health and Environment
9 i	Age-adjusted Traffic Injury Mortality Rate per 100,000 population, 2011-2013	28		13	25	Kansas Department of Health and Environment
9 j	Age-adjusted Unintentional Injuries Mortality Rate per 100,000 population,	45		40	66	Kansas Department of Health and Environment
9 k	Age-adjusted Suicide Mortality Rate per 100,000 population, 2003-2013	34		15	14	Kansas Department of Health and Environment

TAB 10 Preventive Health Profile

The following table reflects future health of county. This information also is an indicator of community awareness of preventative measures.

TAB	Health Indicator	BARTON CO 2015	TREND	KANSAS	NW Alliance (12)	SOURCE
10 a	Access to Exercise Opportunities, 2014	71.1%		70.9%	51.3%	County Health Rankings
10 b	% of Infants Fully Immunized at 24 Mo, 2011-2013	78.1%		71.7%	78.6%	Kansas Department of Health and Environment
10 c	Percent of Adults Ages 65 Yrs + Who Were Immunized Against Influenza Past	53.5%		64.8%	NA	Kansas Department of Health and Environment
10 d	Percent of Adults Who Reported Consuming Fruit Less than 1 Time Per	52.1%		41.7%	NA	Kansas Department of Health and Environment
10 e	Percent of Adults Who Reported Consuming Vegetables Less than 1 Time	31.4%		22.9%	NA	Kansas Department of Health and Environment
10 f	Diabetic screening	81%		NA	86%	County Health Rankings
10 g	Mammography screening	69%		NA	64%	County Health Rankings
10 h	% Annual check-up visit with PCP	NA		NA	NA	TBD
10 i	% Annual check-up visit with Dentist	NA		NA	NA	TBD
10 j	% Annual check-up visit with Eye Doctor	NA		NA	NA	TBD

Community Feedback Research

For CHNA Round #2, it also important to gather community perspective from key stakeholders on their views of progress to address baseline CHNA needs documented 3 years ago. Below are findings of this online community primary research:

Question 1- Overall Quality Ranking

CHNA Round #2 Feedback 2015 - Community Feedback						
1. Three years ago a Community Health Needs Assessment was completed. This assessment identified a number of health needs for our community. Today we are updating this assessment and would like to know how you rate the "Overall Quality" of healthcare delivery in our community?						
Answer Options	Very Good	Good	Fair	Poor	Very Poor	Valid N
Ellinwood Only N=37	9	18	9	1	0	37
Top 2 Boxes (Very Good / Good)	73.0%					
NW Alliance (10) Totals	388	698	215	31	4	1336
Top 2 Boxes (Very Good / Good)	81.3%					

Questions 5 & 6- Community Ranking of Healthcare Services 2015

CHNA Round #2 Feedback 2015 -Barton Co, KS			
5. How would our community rate each of the following ?	NW Alliance (10) Bottom 2 Box %	Barton CO N= 199	Trend
Ambulance Services	4.1%	3.7%	
Child Care	13.4%	14.4%	
Chiropractors	8.3%	4.1%	
Dentists	14.7%	21.2%	
Emergency Room	3.5%	4.4%	
Eye Doctor / Optometrist	10.1%	12.8%	
Family Planning Services	17.2%	20.0%	
Home Health	15.7%	11.5%	
Hospice	11.7%	6.8%	
Inpatient Services	2.0%	3.3%	
Mental Health Services	28.2%	31.6%	
Nursing Home	13.7%	25.3%	
Outpatient Services	1.5%	0.7%	
Pharmacy	3.5%	15.2%	
Primary Care	4.3%	3.9%	
Public Health Dept.	2.1%	5.1%	
School Nurse	5.2%	1.5%	
Visiting Specialists	8.3%	13.0%	

Question 7- Receiving Healthcare Services Outside our Community

CHNA Round #2 Feedback 2015			
7. Over the past 2 years, did you or do you know someone who received health care services outside of our community?	NW Alliance (10) Lower 2 Box %	Ellinwood only N=37	Trend
Yes	83.5%	88.9%	
No	7.9%	2.8%	
Don't know	8.6%	8.3%	
TOTALS	100.0%	100.0%	

Question 8- Requested Discussion Items for Town Hall Agenda

8. Are there any other health needs that we need to discuss at our upcoming CHNA Town Hall meeting?	NW Alliance (Opt C 8) %	Ellinwood Only N=37	Trend
Abuse / Violence	5.3%	3.0%	
Alcohol	5.0%	3.9%	
Cancer	5.7%	5.4%	
Diabetes	4.8%	5.9%	
Drugs / Substance Abuse	7.6%	5.4%	
Family Planning	2.7%	4.4%	
Heart Disease	3.6%	3.0%	
Lead Exposure	1.0%	1.0%	
Mental Illness	6.4%	5.4%	
Nutrition	5.4%	6.9%	
Obesity	8.0%	7.9%	
Ozone (Air)	1.3%	0.0%	
Physical Exercise	6.6%	8.4%	
Poverty	5.0%	3.4%	
Respiratory Disease	2.7%	3.0%	
Sexual Transmitted Diseases	1.6%	0.5%	
Suicide	3.5%	5.4%	
Teen Pregnancy	3.0%	2.5%	
Tobacco Use	3.7%	3.4%	
Vaccinations	6.3%	7.9%	
Water Quality	4.2%	3.0%	
Wellness Education	6.0%	7.9%	
Some Other Need (please specify below)	0.8%	2.5%	
TOTAL	100.0%	100.0%	

IV. Inventory of Community Health Resources

[VVV Research & Development, LLC]

Inventory of Health Services - Barton County				
Cat	HC Services Offered in County: Yes / No	Ellinwood	Health Dept	Other
Clinic	Primary Care	Yes		Yes
Hosp	Alzheimer Center			
Hosp	Ambulatory Surgery Centers			Yes
Hosp	Arthritis Treatment Center			
Hosp	Bariatric/weight control Services			
Hosp	Birthing/LDR/LDRP Room			Yes
Hosp	Breast Cancer			Yes
Hosp	Burn Care			
Hosp	Cardiac Rehabilitation			Yes
Hosp	Cardiac Surgery			
Hosp	Cardiology Services			Yes
Hosp	Case Management	Yes		
Hosp	Chaplaincy / Pastoral Care Services			Yes
Hosp	Chemotherapy			Yes
Hosp	Colonoscopy			Yes
Hosp	Crisis Prevention			
Hosp	CT Scanner	Yes		Yes
Hosp	Diagnostic Radioisotope Facility			
Hosp	Diagnostic / Invasive Catheterization			
Hosp	Electron Beam Computed Tomography (EBCT)			
Hosp	Enrollment Assistance Services			Yes
Hosp	Extracorporeal Shock Wave Lithotripter (ESWL)			
Hosp	Fertility Clinic			
Hosp	FullField Digital Mammography (FFDM)	Yes		
Hosp	Genetic Testing / Counseling			
Hosp	Geriatric Services	Yes		Yes
Hosp	Heart			
Hosp	Hemodialysis			
Hosp	HIV/AIDS Services		Yes	
Hosp	Image-Guided Radiation Therapy (IGRT)			
Hosp	Inpatient Acute Care - Hospital Services	Yes		
Hosp	Intensity - Modulated Radiation Therapy (IMRT) 161			
Hosp	Intensive Care Unit			Yes
Hosp	Intermediate Care Unit	Yes		
Hosp	Interventional Cardiac Catheterization			
Hosp	Isolation Room	Yes		
Hosp	Kidney	Yes		Yes
Hosp	Liver	Yes		
Hosp	Lung	Yes		
Hosp	Magnetic Resonance Imaging (MRI)	Yes		Yes
Hosp	Mammograms	Yes		Yes
Hosp	Mobile Health Services			
Hosp	Multislice Spiral Computed Tomography (<64 slice CT)	Yes		
Hosp	Multislice Spiral Computed Tomography (<64+ slice CT)			
Hosp	Neonatal			
Hosp	Neurological Services			
Hosp	Obstetrics			
Hosp	Occupational Health Services	Yes		
Hosp	Oncology Services			Yes
Hosp	Orthopedic Services			Yes
Hosp	Outpatient Surgery			Yes
Hosp	Pain Management			Yes
Hosp	Palliative Care Program			Yes
Hosp	Pediatric	Yes		Yes
Hosp	Physical Rehabilitation	Yes		Yes
Hosp	Positron Emission Tomography (PET)			
Hosp	Positron Emission Tomography/CT (PET/CT)			
Hosp	Psychiatric Services			Yes

Inventory of Health Services - Barton County				
Cat	HC Services Offered in County: Yes / No	Ellinwood	Health Dept	Other
Hosp	Radiology, Diagnostic	Yes		Yes
Hosp	Radiology, Therapeutic			
Hosp	Reproductive Health			
Hosp	Robotic Surgery			
Hosp	Shaped Beam Radiation System 161			
Hosp	Single Photon Emission Computerized Tomography (SPECT)			
Hosp	Sleep Center			
Hosp	Social Work Services	Yes		
Hosp	Sports Medicine			
Hosp	Stereotactic Radiosurgery			
Hosp	Swing Bed Services	Yes		
Hosp	Transplant Services			
Hosp	Trauma Center			
Hosp	Ultrasound	Yes		Yes
Hosp	Women's Health Services	Yes	Yes	Yes
Hosp	Wound Care	Yes		
SR	Adult Day Care Program			Yes
SR	Assisted Living			Yes
SR	Home Health Services			Yes
SR	Hospice			Yes
SR	LongTerm Care			Yes
SR	Nursing Home Services			Yes
SR	Retirement Housing			Yes
SR	Skilled Nursing Care	Yes		Yes
ER	Emergency Services	Yes		
ER	Urgent Care Center			Yes
ER	Ambulance Services			Yes
SERV	Alcoholism-Drug Abuse			
SERV	Blood Donor Center			
SERV	Chiropractic Services			Yes
SERV	Complementary Medicine Services			
SERV	Dental Services			Yes
SERV	Fitness Center			Yes
SERV	Health Education Classes		Yes	Yes
SERV	Health Fair (Annual)	Yes	Yes	
SERV	Health Information Center		Yes	
SERV	Health Screenings	Yes	Yes	Yes
SERV	Meals on Wheels			
SERV	Nutrition Programs		Yes	
SERV	Patient Education Center		Yes	
SERV	Support Groups		Yes	
SERV	Teen Outreach Services			
SERV	Tobacco Treatment/Cessation Program		Yes	Yes
SERV	Transportation to Health Facilities			
SERV	Wellness Program		Yes	

Physician Manpower - Barton County, KS YR 2013

	Supply Working in Barton County, KS												
	FTE	FTE Based				FTE Visiting				PA/NP Allied			
# of FTE Providers	Totals	CBH	GBRH	St Rose	EDH	CBH	GBRH	St Rose	EDH	CBH	GBRH	St Rose	EDH
Primary Care:													
Family Practice	17.0	2.0	5.0	1.0	2.0	0.0	1.0	0.0	0.0	4.5	0.0	1.0	0.5
Internal Medicine	8.0	1.0	1.0	2.0	0.0	0.0	3.0	0.0	0.0	0.0	0.0	1.0	0.0
Obstetrics/Gynecology	2.1	0.0	2.0	0.0	0.0	0.1	0.0	0.0	0.0	0.0	0.0	0.0	0.0
Pediatrics	2.0	0.0	2.0	0.0	0.0	0.0	0.0	0.0	0.0	0.0	0.0	0.0	0.0
Medicine Specialists:													
Allergy/Immunology	0.2	0.0	0.0	0.0	0.0	0.2	0.0	0.0	0.0				
Cardiology	2.6	0.0	0.0	0.0	0.0	0.2	2.0	0.4	0.0				
Dermatology	0.0	0.0	0.0	0.0	0.0	0.0	0.0	0.0	0.0				
Endocrinology	0.2	0.0	0.0	0.0	0.0	0.1	0.0	0.1	0.0				
Gastroenterology	0.0	0.0	0.0	0.0	0.0	0.0	0.0	0.0	0.0				
Oncology/RADO	5.0	0.0	0.0	1.0	0.0	0.0	4.0	0.0	0.0				
Infectious Diseases	0.0	0.0	0.0	0.0	0.0	0.0	0.0	0.0	0.0				
Nephrology	0.1	0.0	0.0	0.0	0.0	0.0	0.0	0.1	0.0				
Neurology	0.0	0.0	0.0	0.0	0.0	0.0	0.0	0.0	0.0				
Psychiatry	1.0	0.0	0.0	0.0	0.0	0.0	1.0	0.0	0.0				
Pulmonary	2.0	0.0	1.0	0.0	0.0	0.0	1.0	0.0	0.0				
Rheumatology	0.0	0.0	0.0	0.0	0.0	0.0	0.0	0.0	0.0				
Surgery Specialists:													
General Surgery	8.3	1.3	2.0	1.0	0.0	0.0	4.0	0.0	0.0				
Neurosurgery	0.2	0.0	0.0	0.0	0.0	0.1	0.0	0.1	0.0				
Ophthalmology	2.0	0.0	2.0	0.0	0.0	0.0	0.0	0.0	0.0				
Orthopedics	4.0	0.0	3.0	1.0	0.0	0.0	0.0	0.0	0.0				
Otolaryngology (ENT)	2.1	0.0	0.0	0.0	0.0	0.0	2.0	0.1	0.0				
Plastic/Reconstructive	1.0	0.0	0.0	0.0	0.0	0.0	1.0	0.0	0.0				
Thoracic/CardioVasc/Vasc	0.1	0.0	0.0	0.0	0.0	0.1	0.0	0.0	0.0				
Urology	3.4	0.0	0.0	0.0	0.0	0.2	3.0	0.2	0.0				
Hospital Based:													
Anesthesia/Pain	5.0	1.0	2.0	0.0	0.0	0.0	1.0	0.0	0.0			1.0	
Emergency	11.6	0.0	7.0	0.4	0.0	1.0	3.0	0.0	0.0	0.2	0.0	0.0	0.0
Radiology	6.2	0.2	1.0	0.0	0.0	0.2	4.0	0.8	0.0				
Pathology	1.5	0.0	0.0	0.4	0.0	0.1	1.0	0.0	0.0				
Hospitalist *	0.0	0.0	0.0	0.0	0.0	0.0	0.0	0.0	0.0				
Neonatal/Perinatal	0.0	0.0	0.0	0.0	0.0	0.0	0.0	0.0	0.0				
Physical Medicine/Rehab	0.3	0.0	0.0	0.0	0.0	0.3	0.0	0.0	0.0				
TOTALS	85.7	5.5	28.0	6.8	2.0	2.5	31.0	1.8	0.0	4.7	0.0	3.0	0.5

Barton Co, KS – Clara Barton

CBH - Hoisington				
Specialty	Physician	Schedule	Contact for Appointment	Location of Clinic
Allergy/Immunology	Dr. Romito, MD	Twice a Month: 2nd & 4th Thursdays	(913) 894-2894 or (888) 772-2894	Clara Barton Specialty Outreach Clinic 252 W 9th Street
Cardiology	Dr. Lloyd, DO	Once a Month: 3rd Monday	(316) 265-1308 or (800) 362-1093	Clara Barton Specialty Outreach Clinic 252 W 9th Street
Urology	Dr. Weingart, MD	Twice a Month: 2nd & 4th Mondays	(620) 669-2570 or (800) 779-6979	Clara Barton Specialty Outreach Clinic 252 W 9th Street
OB/GYN	Dr. Sanders, MD	Once a Month: 2nd Wednesday	(620) 669-2578 or (800) 779-6979	Clara Barton Specialty Outreach Clinic 252 W 9th Street
CBH - Great Bend				
Specialty	Physician	Schedule	Contact for Appointment	Location of Clinic
Neurosurgery	Dr. Henry, MD	Once a Month: 3rd Friday	(316) 609-2600 or (877) 685-2525	Clara Barton Specialty Outreach Clinic 1031 Jackson Street
Cardiothoracic Surgery	Dr. Grizzell, MD	Once a Month: 1st Friday	(316) 858-5000 or (866) 858-5001	Clara Barton Specialty Outreach Clinic 1031 Jackson Street

***Schedules are tentative subject to holidays and vacations**

Barton County

2014

Resource Guide

<u>EMERGENCY SERVICES</u>	911
Ambulance	911
Fire	911
Police	911
Sheriff	911

HOTLINES

Child / Adult Abuse	800-922-5330
Crime Stoppers	620-792-1300 888-305-0029
Domestic Abuse/Sexual Assault	800-799-7233
Family Crisis Center	620-792-1885 or 866-792-1885 (services for Survivors of Domestic Violence & Sexual Assault)
Fraud Abuse Hotline	800-432-3913
Nursing Home Complaints	KS Dept. of Health & Env 800-842-0078
Parent Helpline	800-332-6378 (Kansas Childrens Service League)
Pregnancy Support	620-227-1562
Poison Control	800-222-1222

Suicide Prevention National Suicide Prevention Lifeline at **1-800-273-TALK (8255)**, a free, 24-hour hotline available to anyone in suicidal crisis or emotional distress. Your call will be routed to the nearest crisis center to you.

Safe Haven Sites for Infants----A mother can leave her newborn baby, up to 45 days old, with an employee at any medical facility, fire department, city or county health department in Kansas. In Kansas, no one ever has to abandon a child again.

Newborns up to 45 days old can now be safely given up by mothers to employees at Health Departments, Hospitals, Medical Facilities or Fire Departments in Kansas with no consequences or abandonment charges. This new program ensures the safety and health of newborns.

BARTON RESOURCE DIRECTORY BY SUBJECTS

ADDICTION & SUBSTANCE ABUSE SERVICES

Catholic Social Service
2201 16th Street
Great Bend, Kansas 67530

620-792-1393

Dream, Inc.
2006 Washington
Great Bend, Ks. 67530

620-792-5152

Heartland Regional Alcohol and Drug Assessment Center (HRADAC)
800-281-0029 - 620-792-5324

Saint Francis Community Services
1508 Main
Great Bend, Ks. 67530

620-793-7454

Smoky Hill Foundation for Chemical Dependency
209 E. 7th Street
Hays, KS 67601 www.smokyhillfoundation.com

785-625-5521
1-800-757-2180
fax 785-625-5115

Valley Hope Centers

1-800-544-5101

CHILDCARE & CHILD SAFETY

Child Abuse Prevention Education
Child Abuse Prevention Education (CAPE)
(formerly Ourselves and Our Families)
PO Box 1625
Great Bend KS 67530
Located in Washington School

620-639-1640

Child Care Aware
Kansas Referral System for **Licensed Child Care**
(referrals for all licensed day care providers & child care centers)

877-678-2548

Department of Children & Families
1305 Patton Road
Great Bend, Ks. 67530

620-792-5324

Helping Hands Preschool
2535 Lakin
Great Bend, Ks. 67530

620-793-1615

Infant & Toddler Car Safety Seats

620-793-4120

Sunflower Early Education Center (EEC)
1312 Patton Road
Great Bend, Ks. 67530

620-792-4087
800-692-4087

CHURCHES

Lasting Life Ministries & Life-Giving Center

office **620-603-6283**

2100 Broadway
Great Bend, Ks. 67530
lifegivingcenter@hotmail.com

Church Name	Address	Phone
Asamblea Apostolica	1516 7 th , Great Bend.	620-792-6240
Calvary Baptist Church	307 West A Ave., Ellinwood	620-564-2070
Central Baptist Church	3301 Lakin, Great Bend	620-793-8491
Church of Christ	1122 Stone, Great Bend	620-792-4647
Church of Jesus Christ of Latter-Day Sts	5851 Eisenhower Ave., Great Bend	620-793-7328
Church of the Nazarene	5 th & Vine, Hoisington	620-653-4122
Community Christian Church	253 NE 30 Rd., Great Bend	620-792-8215
Concordia Lutheran Church	460 W. 9 th St., Hoisington	620-653-4644
Crosspoint Church	57 SE 20 Road, Great Bend	620-793-9880
Cornerstone Fellowship Church	1609 24 th St, Great Bend	620-792-7852
Dominican Chapel of the Plains	2527 Broadway, Great Bend	620-792-1835
Eastside Southern Baptist Church	440 Grapevine, Great Bend	620-617-6489
Ellinwood United Methodist Church	300 W. 1 st St., Ellinwood	620-564-2056
Emmanuel Lutheran Church	1109 North Vine, Hoisington	620-653-4345
Extreme Hope Christian Fellowship		
Faith Community Church	293 B W. Bt. Co. Rd Great Bend	620-793-8084
Fellowship of Faith	1301 Sheridan St, Great Bend	620-792-5440
First Assembly of God	601 S. Patton Rd., Great Bend	620-792-5211
First Baptist Church	1601 19 th , Great Bend	620-792-3894
First Baptist Church	503 SE 110 Ave #A., Ellinwood	620-564-2875
First Bible Baptist Church	5962 4 th St., Great Bend	620-792-2936
First Christian Church	5230 Broadway, Great Bend	620-793-6603
First Church of God	1224 Baker, Great Bend	620-793-5231

First Congregational United Church of Christ	3400 21 st , Great Bend	620-792-5346
First Landmark Missionary Baptist Ch	Great Bend	620-792-3200
First Presbyterian Church	2400 Washington, Great Bend	620-792-2594
First Southern Baptist Church	3301 19 th , Great Bend	620-793-8444
First United Methodist Church	2123 Forest, Great Bend	620-792-2148
First United Methodist Church	467 W. Third, Hoisington	620-653-4065
Foundry Methodist Church	5401 Broadway, Great Bend	620-793-3327
Grace Community Church	210 McKinley, Great Bend	620-792-7814
Heritage Baptist Church	2000 Monroe, Great Bend	620-793-9990
Hoisington Bible Church	501 E. Second, Hoisington	620-653-4533
Holy Family Catholic Church	Odin	620-653-2695
Immaculate Conception Catholic Ch	310 Main, Claflin	620-587-3628
Immanuel United Church of Christ	701 N. Fritz, Ellinwood	620-564-2950
Inglesia Adventista del Septimo Dia	1435 19th St., Great Bend	620-792-7925
Kingdom Hall of Jehovah's Witnesses	3205 Williams, Great Bend	620-792-4062
King Memorial United Methodist	1608 Odell, Great Bend	620-793-6778
Living Joy Community Church	354 W. 1st, Hoisington	620-653-2702
New Jerusalem Church	300 Santa Fe, Pawnee Rock	620-982-4520
Our Savior Lutheran Church	5860 Eisenhower, Great Bend	620-792-6901
Pawnee Rock Christian Church	519 Center, Pawnee Rock	620-982-4406
Peace Lutheran Church	1243 Cr 400, Albert	620-923-4624
River of Life Foursquare Church	1219 Main, Great Bend	620-792-4933
Seventh Day Adventist Church	7 SW 30 Ave., Great Bend	620-793-5096
Spanish Mission Church Inglesia	242 N. Hwy 281, Great Bend	620-793-5266
Bautista Generzareth		
St. John Lutheran Church	Fifth & N. Wilhelm, Ellinwood	620-564-2044
St. John's Episcopal Church	2701 17 th St., Great Bend	620-792-6011
St. John the Evangelist Catholic Ch	108 E. 5 th St., Hoisington	620-653-2963
St. Josephs Catholic Church	214 N. Main St., Ellinwood	620-564-2534
St. Mark Lutheran Church	2101 Jackson, Great Bend	620-792-4796
St. Patrick Catholic Church	4100 Broadway, Great Bend	620-792-1396
St. Paul Lutheran Church	423 Main, Galatia	620-935-4303
St. Rose of Lima Catholic Church	1424 Baker, Great Bend	620-792-3641
Trinity Lutheran Church	2701 24 th Street, Great Bend	620-793-7894
Trinity United Methodist Church	5700 Broadway, Great Bend	620-793-6016
United Methodist Church	120 Third, Claflin	620-587-3505
Zion Lutheran Church	121 Fifth, Claflin	620-587-3698

CLOTHING

Birthright

2525 8th St.

Great Bend, Ks. 67530

620-792-3316

Hungry Heart Soup Kitchen

1515 Williams

Great Bend, Ks. 67530

The Salvation Army2545 10th Street

Great Bend, Ks. 67530

Contact: Jane Berg, Manager Justin Nickerson, Assistant Manager

jane_berg@usc.salvationarmy.org**620-792-4299****DISABILITY SERVICES****Assistive Technology for Kansans****800-526-3648**

ATK connects people with disabilities and health conditions of all ages with the assistive technology they need to learn, work, play and participate in community life safely and independently. Each of the five AT Access Sites have experienced staff who can assist Kansans see and try a device, borrow a device, get a used device or help locate funding for a new or used device, or teach individuals or groups how to maintain and use technology (durable medical equipment—cane, walker, wheelchair, etc). The AT Access Sites are located in Oakley, Salina, Wichita, Topeka and Parsons. An affiliate office for obtaining high quality refurbished technology is located in Garden City. See current list of equipment online www.atk.ku.edu

Department of Children & Families

1305 Patton Road

Great Bend, Ks. 67530

Contact: Francis Hawpe, Site Manager

620-792-5324**Kansas Guardianship Program**

3248 Kimball Ave.

Manhattan, Ks. 66503

800-672-0086www.ksqprog.org**Kansas Legal Services, Inc.** www.kansaslegalservices.org**800-723-6953****LIEAP (Low Income Energy Assistance Program)**

Great Bend DEPT. CH. & FAM. Office 1305 Patton Road

Great Bend, Ks. 67530

www.ks-energy-assistance.com**620-792-5324**

ext. 200

fax 620-792-5373

1-866-445-4327

LINK (Living Independently in Northwest Kansas)

1103 Main

Great Bend, Ks. 67530 Contact: Denise Henkle denisehenkle@ruraltel.net**620-792-6600**

620-792-2368 fax

Meals on Wheels1819 11th Street

Great Bend, Ks. 67530

620-792-5942

Friendship Meals 1-800-530-5068

For Meals on Wheels in

Great Bend, call RSVP at 792-1614.Ellinwood meals, call 620-564-3649;

Hoisington meals call 620-653-4619;
Great Bend High Rise meals call 792-3352.

For other meal site information call 792-1241. Food stamps can be used as payment for meals

Rosewood Services

620-793-5888

384 N. Washington
Great Bend, Ks. 67530
Contact: Tammy Hammond www.rosewood.com

SKIL

785-628-8019

Southwest Developmental Services, Inc.

620-793-7604

3111 W. 10th Street, Suite 102
Great Bend, KS 67530

Sunflower Diversified Services

620-792-1321

8823 4th Street
P.O. Box 838
Great Bend, Ks. 67530
Contact: Ladeska (Decky) Makings, COO
lmakings@sunflowerdiv.com

EDUCATION SERVICES

Barton County Academy

620-792-7995

5220 West 10th
Great Bend, Ks. 67530
Contact: Justin Schwartz
justins@essdack.org

Barton Community College

620-792-9214

Workforce Training and Community Education

245 NE 30th Rd
Great Bend, Ks. 67530
Contact: Elaine Simmons, Dean of Workforce Training and Community Education
simmonse@bartonccc.edu

Barton Community College

620-792-9349

Career Center

245 NE 30th Rd
Great Bend, Ks. 67530

Barton Community College 620-793-5794
Center for Adult Education
1025 Main
Great Bend, Ks. 67530
Contact: Joseph Thorton
thorntonj@bartonccc.edu

Catholic Social Service 620-792-1393
2201 16th Street
Great Bend, Ks. 67530

Central Kansas Educational Opportunity Center 620-793-8164
1025 Main
Great Bend, Ks. 67530
Contact: Susie Burt
burts@bartonccc.edu

Family Crisis Center
Box 1543
Great Bend, Ks. 67530
(office) 620-793-9941
(24 Hour Crisis Line) 620-792-1885

Flint Hills Job Corps Center 785-537-7222
4620 Eureka Drive
Manhattan, KS 66503
fax 785-564-4945

Great Bend Recreation Commission 620-793-3755
1214 Stone Street
P.O. Box 353
Great Bend, Ks. 67530
Contact: Diann Henderson
dhenderson@gbrk.kscoxmail.com

Department of Children & Families Great Bend 620-792-5324
1305 Patton Road
Great Bend, Ks. 67530

Harvest America 877-227-7764
2601 Central Ave # 20
Dodge City, KS 67801-6212
(620) 227-7882

Community Development Institute (CDI) 620-793-5221
Head Start serving South Central Kansas
2535 Lakin Ave.
Great Bend, KS 67530

Helping Hands Preschool

2535 Lakin Avenue
Great Bend, Ks. 67530

620-793-1615**Job Success**

1305 Patton Rd.
Great Bend, Ks. 67530

620-792-7390**Juvenile Services 20th Judicial District**

1213 Baker
Great Bend, Ks. 67530
Contact: Laurie White, Director
lwhite@bartoncounty.net

620-793-1930
fax 620-793-1977**Kansas Works**

1025 Main
Great Bend, Ks. 67530

620-793-5445**K-State Research and Extension-Barton County**

1800 12th St.
Great Bend, Ks. 67530

620-793-1910**L&L Training & Consultation**

910 Main Street
Great Bend, Ks 67530

620-282-1330
fax 1-620-793-8224**Parent/Teacher Resource Center (PTRC)**

Washington School
2535 Lakin
Great Bend, KS

620-793-1633**Regional Prevention Center of NW Kansas**

209 E. 7th
Hays, Ks. 67601
Contact Website: www.smokyhillfoundation.com

785-625-5521
1-800-757-2180**Saint Francis Community Services**

1508 Main
Great Bend, Ks. 67530

620-793-7454**SER Corporation**

1008 E. 17th, #7
Hays, Ks. 67601 www.sercorp.com
Contact Vicki Lumpkins vlumpkins@sercorp.com

785-623-4016
877-723-4016
fax 785-623-4007

SER Jobs for Progress National Inc.
SER SCSEP Hays
Contact: Shaun Linenberger (Case Manager)
1008 E 17th Street
Hays, KS 67601

785-623-4006
785-623-4472 Fax
Hours: Mon – Fri 8:00am to 5:00pm
E Mail: slinenberger@ser-national.org

Sunflower Diversified Services
8823 4th Street
P.O. Box 838
Great Bend, Ks. 67530
Contact: Ladeska (Decky) Makings, COO
lmakings@sunflowerdiv.com

620-792-1321

Sunflower Early Education Center(EEC)
1312 Patton Road
Great Bend, Ks. 67530

620-792-4087
800-692-4087

USD 428 Parents As Teachers Consortium
Riley Elementary School
1515 10th Street
Great Bend, Ks. 67530

620-793-1500
620-793-1506

United Way of Central Kansas
1125 Williams
Great Bend, Ks. 67530
Contact: Julie Smith
unitedwaycentralks@hotmail.com

620-792-2403

Youthfriends Kansas
201 Patton Rd.
Great Bend, Ks. 67530
Contact: Michelle Daniel, USD 428 Coordinator
www.youthfriends.org

620-793-1500
fax 620-793-1544

ELDERLY SERVICES

Assistive Technology for Kansans

800-526-3648

ATK connects people with disabilities and health conditions of all ages with the assistive technology they need to learn, work, play and participate in community life safely and independently. Each of the five AT Access Sites have experienced staff who can assist Kansans see and try a device, borrow a device, get a used device or help locate funding for a new or used device, or teach individuals or groups how to maintain and use technology(durable medical equipment—cane, walker, wheelchair, etc). The AT Access Sites are located in Oakley, Salina, Wichita, Topeka and Parsons. An affiliate office for obtaining high quality refurbished technology is located in Garden City. See current list of equipment online www.atk.ku.edu

Commission on Aging

2005 Kansas
Great Bend, Ks. 67530
Contact: Rosy Tomlin

620-792-3906**Department of Children & Families Great Bend**

1305 Patton Road
67530

620-792-5324
Great Bend, Ks.**ElderCare, Inc.**

1819 11th Street
Great Bend, Ks. 67530
Contact: Janet Splitter, Executive Director
Karen Sessler, Care Manager

620-792-5942
866-792-5942
(Friendship Meals) 800-530-5068**Kansas Guardianship Program**

3248 Kimball Ave.
Manhattan, Ks. 66503
Contact: Barton County David Olson dolson@ksgprog.org

800-672-0086
www.ksgprog.org**Kansas Weatherization Assistance Program – KWAP****877-505-5150****LIEAP (Low Income Energy Assistance Program)**

Great Bend DEPT. CH. & FAM. Office 1305 Patton Road
Great Bend, Ks. 67530
www.ks-energy-assistance.com

620-792-5324
ext. 200
1-866-445-4327
fax 620-792-5373**Meals on Wheels**

1819 11th Street
Great Bend, Ks. 67530

620-792-1614
Friendship Meals 1-800-530-5068

For Friendship Meals in Great Bend, call Great Bend Senior Center at 792-3906; in Hoisington,
call 620-653-2555 and in Ellinwood, call 620-564-3649.

For Meals on Wheels in Great Bend, Hoisington or Ellinwood, call Volunteers in Action/RSVP at 792-1833 or 792-1614. For other meal site information call 792-1241.

Pathways ResCare Kansas, Inc.
ResCare Home Care

2317 Washington Street
Great Bend, KS 67530

620-793-8501
620-793-8501**Senior Center**

2005 Kansas
Great Bend, Ks 67530

620-792-3906**Social Security Administration**

811 E. 30th St., Suite A
Hutchinson, KS 67502
www.socialsecurity.gov

620-663-8341
1-877-846-8333

Southwest Kansas Area Agency on Aging**620-793-6633**

1905 Washington
Great Bend, Ks. 67530
Contact: Nancy Brady

Veterans Administration**1-800-827-1000****Veterans Hospital****1-800-878-6881****Veterans Service Representatives see Index****Volunteers in Action (RSVP)****620-792-1614**

2012 Lakin Street
Great Bend, Ks. 67530

See Yellow Pages of Phone Directory for Assisted Living and Nursing Homes.

EMERGENCY SERVICES & AID

American Red Cross Disaster Response and Planning**316-219-4051**

www.midwaykansas.redcross.org

1900 E. Douglas
Wichita, Kansas 67214
Darla Hesse, Manager

hesseda@usa.redcross.org

fax 316-219-4006
Cell 316-650-9105

American Red Cross Reno County Chapter**620-662-3336**

111 North Walnut, Suite B
Hutchinson, Ks. 67501-7165

Fax 620-662-0363

Regional Contact: Megan Gottschalk/Hammersmith, Director
megan@redcross.kscoxmail.com

Barton County Health Department- WIC Program**620-793-1909**

1300 Kansas Avenue
Great Bend, Ks. 67530
Contact: Beverly Frizell, RD, LD

620-793-1902

bfrizell@bartoncounty.org

Barton County Special Education Cooperative**620-793-1550**

150 SW 40th Avenue(will be moving to Washington School)
Great Bend, Ks. 67530

Catholic Social Service**620-792-1393**

2201 16th Street
Great Bend, Ks. 67530

Emergency Aid Council
3007 10th St.
Great Bend, Ks. 67530

620-793-3345

Safe Haven Sites for Infants

Newborns up to 45 days old can now be safely given up by mothers to employees at Health Departments, Hospitals, Medical Facilities or Fire Departments in Kansas with no consequences or abandonment charges. This new program ensures the safety and health of newborns. In Kansas, no one ever has to abandon a child again.

The Salvation Army

2545 10th Street
Great Bend, Ks. 67530

Contact: Jane Berg, Manager

jane_berg@usc.salvationarmy.org

620-792-4299

United Way of Central Kansas

1125 Williams
Great Bend, Ks. 67530

Contact: Julie Smith

unitedwaycentralks@hotmail.com

620-792-2403

EMPLOYMENT

Barton Community College

Career Center

245 NE 30th Rd
Great Bend, Ks. 67530

620-792-9349

Barton Community College Center for Adult Education

1025 Main
Great Bend, Ks. 67530

Contact: Joseph Thorton

thorntonj@bartonccc.edu

620-793-5794

Central Kansas Educational Opportunity Center

1025 Main
Great Bend, Ks. 67530

Contact: Susie Burt

burts@bartonccc.edu

620-793-8164

Flint Hills Job Corps Center

4620 Eureka Drive
Manhattan, KS 66503

785-537-7222

fax 785-564-4945

Department of Children & Families (SRS)

1305 Patton Road
Great Bend, Ks. 67530

620-792-5324**Job Success**

1305 Patton Rd.
Great Bend, Ks. 67530

620-792-7390**Kansas Works**

1025 Main
Great Bend, Ks. 67530

620-793-5445**SER Corporation**

1008 E. 17th, #7
Hays, Ks. 67601
www.sercorp.com
Contact Vicki Lumpkins
vlumpkins@sercorp.com

785-623-4016

877-723-4016
(fax)785-623-4007

SER Jobs for Progress National Inc.

SER SCSEP Hays
Contact: Shaun Linenberger (Case Manager)
1008 E 17th Street
Hays, KS 67601

785-623-4006

785-623-4472 Fax
Hours: Mon – Fri 8:00am to 5:00pm
E Mail: slinenberger@ser-national.org

Sunrise Staffing Services, LLC

2015 Forest, Room 202
Great Bend, Ks. 67530
Contact: Chris & Melanie Ryan
cryan_sss@sbcglobal.net

620-792-1004**FOOD****Barton County Health Department- WIC Program**

1300 Kansas Avenue
Great Bend, Ks. 67530
Contact: Beverly Frizell, RD, LD
bfrizell@bartoncounty.org

620-793-1909**620-793-1902****Commission on Aging**

2005 Kansas
Great Bend, Ks. 67530
Contact: Rosy Tomlin

620-792-3906

Commodities (Emergency Food Assistance Program (TEFAP)

Available at

Great Bend Regional Service Center - DEPT. CH. & FAM.

1305 Patton Road

Fam.kansas.org

Great Bend, Ks. 67530

620-792-5324

www.Dept. Ch. &

ElderCare, Inc.

1819 11th Street

Great Bend, Ks. 67530

Ellinwood Food Bank

701 N. Fritz

Ellinwood, Ks. 67526

620-792-5942

866-792-5942

(Friendship Meals)

800-530-5068

620-564-2660

Food Bank of Barton County

3007 10th Street

Great Bend, KS

620-792-4001

Golden Belt Regional Food Program

Angel Food Ministries

1912 11th Street

Great Bend, KS 67530

www.angelfoodministries.com

620-639-5355

888-819-3745

Great Bend Regional Service Center - DEPT. CH. & FAM.

1305 Patton Road

Fam.kansas.org

Great Bend, Ks. 67530

620-792-5324

www.Dept. Ch. &

Hoisington Community Food Bank

467 W 3rd

Hoisington, Ks. 67544

620-653-2119

Hungry Heart Soup Kitchen

1515 Williams

Great Bend, Ks. 67530

Kansas Food 4 Life (food program)

4 NW 25 Road

Great Bend, KS 67530 (across from Cox Communications on N. Washington St.)

www.kansasfood4life.org

620-793-7100

Meals on Wheels

1819 11th Street

Great Bend, Ks. 67530

620-792-1614

Friendship Meals 1-800-530-5068

Prairie Land Food (formerly Heartland Share)

Assembly of God Church
2106 San Domingo
Great Bend, Ks. 67530

620-793-8510**ResCare Home Care****Pathways ResCare Kansas, Inc.**

2317 Washington Street
Great Bend, KS 67530

620-793-8501**620-793-8501****The Salvation Army**

2545 10th Street
Great Bend, Ks. 67530

620-792-4299**WIC –Barton County Health Department**

1300 E. Kansas, Suite B
Great Bend, KS 67530

620-793-1909

620-793-1902

see page 3

HEALTH CARE

Angels Care Home Health

527 S. Fossil, Russell, Kansas 67665
Covering Central Kansas

785-445-3500

FAX/785-445-3502

Barton County Health Department

1300 Kansas Avenue
Great Bend, Ks. 67530
Contact: Lily Akins laking@bartoncounty.org

620-793-1902**Catholic Social Service*****Pregnancy Counseling***

2201 16th Street
Great Bend, Kansas 67530

620-792-1393**The Center for Counseling & Consultation**

5815 Broadway
Great Bend, Ks. 67530

620-792-2544**The Center for Counseling & Consultation*****Children's Based Services***

5815 Broadway
Great Bend, Ks. 67530

620-792-2544

The Center for Counseling & Consultation
Community Support Services
5815 Broadway
Great Bend, Ks. 67530

620-792-2544

Central Dental Center
4805 W. Central
Wichita, Ks. 67212

316-945-9845

Dentists

Dunekack, Tatum	2124 Washington	Great Bend	620-792-7690
Gust –Morrison Orthodontics	2340 Washington	Great Bend	620-792-4217
Hart, David	1905 19th	Great Bend	620-792-5523
Herres, Blake	568 W 7 th	Hoisington	620-653-2161
Hildebrand, Ross	3822 6th	Great Bend	620-792-1231
Huslig, Marc	2215 Broadway	Great Bend	620-793-7662
Kutina Dental Office	3820 6th	Great Bend	620-792-2114
Ohmacht, Chad	1701 Williams	Great Bend	620-792-1941
Reinhardt, Randall	2016 19th	Great Bend	620-792-1236
Ritter, HK	165 W 7th	Hoisington	620-653-2511
Trimmel, Lawrence	1037 Sheridan	Great Bend	620-792-8116

Department of Children & Families Great Bend
1305 Patton Road
Great Bend, KS 67530

620-792-5324

ElderCare, Inc.

620-792-5942
620-792-1241

Golden Belt Home Health and Hospice
3520 Lakin Suite 105
Great Bend, KS 67530

620-792-8171
fax: 620-792-3825

Great Bend Regional Hospital
514 Cleveland Street
Great Bend, KS 67530

620-792-8833

Harden Hospice Kansas
1117 N. Washington
Great Bend, KS 67530

620-793-5034

Healing Hearts Ranch
155 SE 1st Ave.
Great Bend, KS 67530
Contact: Scott Stinemetz

620-792-5173

scott@healingheartsranch.com

Healthwave
P.O. Box 3599
Topeka, Ks. 66601

800-792-4884

Heart of Kansas (formerly We Care)
1905 19th
Great Bend, Ks. 67530

620-792-5700
620-792-5742 (fax)

Harden Hospice Kansas (Hospice of Kansas)
1117 N. Washington
Great Bend, KS

888-276-5757

Kan-Be-Healthy (child health exams)

800-766-9012

Kansas Health Insurance—Temporary Federal Pool

1-877-505-0511

KanCare- KDHE/DHCF **Work: 620-792-5700** **Cell: 620-282-3555**
Assistance with Applications and Eligibility Dermination for Medical Cards. KanCare resource.
Patricia Satterlee
Heart of Kansas Clinic
1905 19th
Great Bend, KS 67530

Kansas Quitline

1-800-QUIT-NOW
1-800-784-8669

Prescription Assistance:

- **Heart of Kansas Family Health-(for patients only)**
- **St. Rose Ambulatory & Surgery Center**

620-792-5700
620-792-6541

Hours: Tuesday: 2:00p.m.-4:00p.m.
Wednesday: 9:00a.m.-1:00p.m.
Thursday: 2:00p.m.-4:00pm.

Primary Care

Central Kansas Family Practice

1309 Polk
Great Bend, KS 67530
792-5341
Ancillary:793-5404

Fax: 792-3702
(Med Park)Fax: 792-2665

Jeffrey E. Brozek M.D.
Terri Turkle Huslig M.D.
Charles Keener M.D.
Perry M. Smith M.D.
Elise Snapp APRN

Clara Barton Medical Clinic

252 W. 9th
Hoisington, Ks
653-2386

Fax: 653-4186

Nathaniel C. Knackstedt D.O.
Debra Brockel P.A.
T. Scott Webb, DO
Kristin Ohnmacht, PA-C
Phillip Barnes P.A.

Ellinwood Hospital Clinic

611 N. Main
Ellinwood, KS 67526

Chris Brown, M.D.
Charlie Joslin M.D.
Cynthia Streck APRN

564-3771	Fax: 564-2684	Elizabeth Warman P.A.
Great Bend Children's Clinic 1021 Eisenhower Great Bend, KS 67530 792-5437	Fax: 793-5245	Marta J. Edmonds M.D. Ryan M. Williams M.D. Karen Norris APRN
Great Bend Internists 3515 Broadway Great Bend, KS 67530 793-8429	Fax: 793-6014	Jean Pringle M.D. James McReynolds M.D. Jeanne Burmester P.A.C. Edmond Habash MPAS, RPA-C
St. Rose Family Med.& Urgent Care Clinic 3515 Broadway Great Bend, KS 67530 792-3345 Fax: 792-3767 <i>Family Medicine Hours: 8am to 5pm, Monday thru Friday</i> <i>Urgent Care Hours: 8am to 8 pm Daily No Appointment Needed</i>		Stanley Hatesohl, M.D. Charise Oelger P.A.-C William Simon, P.A.-C
Heart of Kansas Family Health Care 1905 19th Street Great Bend, KS 67530 792-5700	Fax: 792-5742	Immanuel Uketui, MD Jackie Reed APRN. Jamie Schneider APRN. Malorie Hamlin APRN
The Center for Counseling & Cons. 5815 Broadway Great Bend, KS 67530 792-2544	Fax: 792-7052	Patrick W. Stang, M.D. Pat Mermis APRN Alice Griffitt P.A.
Heartland Regional Health Clinic 514 Cleveland St Great Bend, KS 67530 793-7520	Fax: 791-6893	Mark Van Norden, M.D. Diane Haines APRN Julie McClaren APRN
Kansas Medical Specialist 3720 10th Great Bend, KS 67530 792-4500	Fax: 792-4504	Celestine Ofoma M.D.
<u>Womens Health</u>		
Heartland Regional OB/GYN 514 Cleveland Great Bend, KS 67530 792-2151	Fax: 793-9399	Roger W. Marshall M.D. Jodi Henrickson M.D.
<u>Surgeons</u>		
Clara Barton Surgical Services	1031 Jackson	Robin D. Durrett, DO FACOS

351 W. 10th
Hoisington, KS 67544
620-653-4191

Great Bend, KS 67530
793-6990
Fax: 793-3040

Fax: 653-4566

Clara Barton Surgical Services Orthopedics

Abelardo Sotelo, M.D.
353 W 10th St
Hoisington, KS 67544
Phone: 620-292-6060
Fax: 620-292-6301

St. Rose Surgical & Orthopedic Clinic

3515 Broadway Suite 122
Great Bend, KS 67530
620-792-1227

Ana Refinetti, M.D.

Fax: 792-8029

Clara Barton Hospital 250 West Ninth Street Hoisington, KS 67544 Phone: 620-653-2114 Fax: 620-653-2350	Clara Barton Medical Clinic 252 West Ninth Street Hoisington, KS 67544 Phone: 620-653-2386 Fax: 620-653-4186	Clara Barton Hospital Surgical and Specialty Outreach Clinic 351 West Tenth Street Hoisington, KS 67544 Phone: 620-653-4191 Fax: 620-653-4566	Clara Barton Foundation P.O. Box 25 Hoisington, KS 67544 Phone: 620-653-5012 Fax: 620-653-2350
---	---	--	---

Psychological Services & Consultation

785-220-4562

1910 18th Street
Great Bend, KS

Drs. Jane Davis & Steve Walters

Public Health

Barton County Health Department
WIC Program, BCHD

620-793-1902

620-793-1909

Public Insurance

KanCare- KDHE/DHCF

Work: 620-792-5700 Cell: 620-282-3555

Assistance with Applications and Eligibility Determination for Medical Cards. KanCare resource.
(in alphabetical index)

HealthCare.Gov

Health Insurance Marketplace

<http://insureks.org/>

Information and a tutorial on navigating the Marketplace, Tax Credit Calculator to help people determine if they qualify, and personal assistance.

ResCare HomeCare

620-793-8501

2317 Washington Street
Great Bend, KS

Home Health Care

St. Rose Family Medicine & Urgent Care Clinic

620-792-3345

3515 Broadway

Great Bend, KS 67530

Family Medicine Hours:

8am to 5 pm, Monday thru Friday

Urgent Care Hours:

8am to 8 pm Daily, No Appointment Needed

St. Rose Ambulatory & Surgery Center

620-792-2511

3515 Broadway
Great Bend, KS 67530

St. Rose Rehab Services

3515 Broadway
Great Bend, KS 67530

620-786-6111

St. Rose Sleep-Wake Disorders

3515 Broadway
Great Bend, KS 67530

620-786-6315

Sandstone Bridge Center

3520 Lakin Street
Great Bend, KS 67530

620-603-6022

Senior Health Insurance Counseling for KS (SHICK)

www.agingkansas.org/SHICK/shick_index.html

1-800-860-5260

Tobacco Cessation

1-800-QUIT-NOW

1-800-784-8669

United Methodist Mexican-American Ministries, Inc. (MAM)

712 St. John Street
P.O. Box 766
Garden City, Ks. 67846

620-275-1766

620-275-4729 (fax)

Veterans Administration

Veterans Hospital

Veterans Service Representatives

1-800-827-1000

1-800-878-6881

see prior listings

HOTLINES

Child/Adult Abuse Reporting

800-922-5330

CrimeStoppers

620-792-1300

888-305-0029

**Department of Children & Families Great Bend
Domestic Abuse/Sexual Assault**

620-792-5324

888-363-22873

888-END-Abuse

Family Crisis Center

620-792-1885

866-792-1885

Fraud Abuse Hotline

800-432-3913

Kansas Children's Service League-Parent Helpline
Box 517
Wichita, Ks. 67201

316-942-4261
800-332-6378
(Helpline)
www.kcsl.org

Kansas Legal Services, Inc.
www.kansaslegalservices.org

800-723-6953

Kansas Weatherization Assistance Program – KWAP

877-505-5150

Medicaid (Customer Assistance)

800-766-9012

Nursing Home Complaints KS Dept. of Health & Env

800-842-0078

Poison Control

800-222-1222

Pregnancy Support

620-227-1562

Safe Haven Sites for Infants

Newborns up to 45 days old can now be safely given up by mothers to employees at Health Departments, Hospitals, Medical Facilities or Fire Departments in Kansas with no consequences or abandonment charges. This new program ensures the safety and health of newborns.

In Kansas, no one ever has to abandon a child again.

Senior Health Insurance Counseling for KS (SHICK)
www.agingkansas.org/SHICK/shick_index.html

1-800-860-5260

Suicide Prevention Lifeline
www.suicidepreventionlifeline.org/

1-800-273-TALK (8255)

Tobacco Cessation

1-800-QUIT-NOW
1-800-784-8669

HOUSING

Cedar Park Place

620-793-8155

Cedar Park Place features 63 units of affordable rental housing for low-income seniors in Great Bend, Kansas. The property was built in 1981 by the Dominican Sisters of Peace in Great Bend. Mercy Housing has provided property management services for this property since 1992. The property is located near St. Rose Ambulatory & Surgery Center, a community park, schools and other community resources.

Cherry Village

620-793-9805

Housing/Assisted Living/Nursing Home

Great Bend Housing Authority

620-793-7761

1101 Kansas Ave.
Great Bend, Ks. 67530

Harvest America

877-227-7764

2601 Central Ave # 20
Dodge City, KS 67801-6212

(620) 227-7882

Housing Opportunities, Inc.

620-792-3299

HUD

1101 Kansas
Great Bend, KS 67530

620-793-7761

HUD

Box 1636
Dodge City, Ks. 67801

620-275-1619

Interfaith Housing Services

PO Box 1987
Hutchinson, KS 67504-1987

1-877-447-5927
620-662-8399 fax

Kansas Weatherization Assistance Program – KWAP

877-505-5150

Lasting Life Ministries & Life-Giving Center

2100 Broadway Great Bend, Ks. 67530

620/603-6283 office

LIEAP (Low Income Energy Assistance Program)

Great Bend DEPT. CH. & FAM. Office 1305 Patton Road
Great Bend, Ks. 67530 www.ks-energy-assistance.com

620-792-5324
Ext 200
1-866-445-4327
620-792-5373 fax

Saint Francis Community Services

1508 Main
Great Bend, Ks. 67530

620-793-7454

Sommerset Place

5803 16th St. Terrace
Great Bend, Ks. 67530
Contact: Bernadean Herl

620-793-8075
620-793-7417 fax

**US Department of Housing and Urban
Development**

Kansas Regional Office www.hud.gov/local/index.cfm

913-551-5462

LAW ENFORCEMENT ORGANIZATIONS & LEGAL SERVICES

20th Judicial District Court Services

1806 12th Street

620-793-1887

Great Bend, Ks. 67530
Contact: Sabrina Chism, Chief Court Services Officer
Albert Fire Department
Albert, Ks. 67511

ctservechism@cpcis.net

620-923-4600
911

Barton County Sheriff's Office
1416 Kansas Ave.
Great Bend, Ks. 67530

620-793-1876
911

Claflin Fire & Ambulance Department
309 W. Front
Claflin, Ks. 67525

620-587-3498
911

Claflin Police Department
111 E. Hamilton
Claflin, Ks. 67525

620-587-3344
911

Ellinwood Fire & Ambulance Department
Ellinwood, Ks. 67526

620-564-3161
911

Ellinwood EMS (Ambulance)
(Emergency)

620-564-2408
911

Ellinwood Police Department
Ellinwood, Ks. 67526

620-564-3001
911

Great Bend Fire & EMS
1205 Williams
Great Bend, Ks. 67530
Great Bend Police Department
1217 Williams
Great Bend, Ks. 67530

620-793-4140
911

620-793-4120
911

Hays Legal Services
2017 Vine Street
Hays, Ks. 67601

785-625-4514
Application Line
1-800-723-6953

Hoisington Ambulance Service
Hoisington, Ks. 67544

620-653-4150
911

Hoisington Fire Department (volunteer)
Hoisington, Ks. 67544

911

Hoisington Police Department

620-653-4995

109 E. 1st
Hoisington, Ks. 67544

911

Kansas Bureau of Investigation (KBI)
625 Washington
Great Bend, Ks. 67530

620-792-4354
1-800-KS-CRIME

Kansas Legal Services, Inc.
www.kansaslegalservices.org

800-723-6953

LIBRARIES

Barton Community College
245 NE 30th Rd
Great Bend, Ks. 67530

620-792-9362
1-888-403-1900

Claflin Independent Township Library
108 Main
Claflin, Ks. 67511

620-587-3488

Ellinwood School Community Library
210 N. Schiller Ave.
Ellinwood, Ks. 67526

620-564-2306

Great Bend Public Library
1409 Williams
Great Bend, Ks. 67530

620-792-2409

Hoisington Public Library
169 S. Walnut
Hoisington, Ks. 67544

620-653-4128

SUPPORT GROUPS

20th Judicial District Court Services
1806 12th Street
Great Bend, Ks. 67530
Contact: Sabrina Chism, Chief Court Services Officer
ctservechism@cpcis.net

620-793-1887

Barton County Young Men's Organization
1515 Morton
Great Bend, Ks. 67530

620-792-1619

Birthright2525 8th St.

Great Bend, Ks. 67530

Contact: Betty Schneider, Director

betty.l.schneider@gmail.com**620-792-3316****Dream, Inc.**

2006 Washington

Great Bend, Ks. 67530

620-792-5152**Family Crisis Center**

Box 1543

Great Bend, Ks. 67530

(office) **620-793-1965**
(24 Hour Crisis Line) 620-792-1885**Golden Belt Home Health and Hospice**

3520 Lakin Suite 105

Great Bend, KS 67530

Contact: Donita Wolf

620-792-8171

Fax: 620-792-3825

Juvenile Services 20th Judicial District

1213 Baker

Great Bend, Ks. 67530

Contact: Laurie White, Director

lwhite@bartoncounty.net**620-793-1930**

620-793-1977 (fax)

Kansas Quitline**1-800-QUIT-NOW****1-800-784-8669**

Free telephone sessions with a Quit Coach to help people quit using tobacco (smoking cigarettes, chewing tobacco, snus, etc.). English & Spanish speakers available. Call anytime day or night to get started.

The Kansas Tobacco Quitline recently added an **online tobacco cessation counseling** service, Web Coach[®]. The online service available at www.QuitNow.net/Kansas provides counseling and support materials based on individuals' readiness to quit tobacco use. The program, which is free to Kansas residents, will help tobacco users create an easy-to-follow quitting plan that will help them prepare, take action and live without tobacco.

Web Coach provides online access to highly trained cessation Coaches by live chat and e-mail. Users will also gain membership to a private, online community where they can complete activities, watch videos, and join in discussions with others in the program. Interactive trackers on the Web site measure the money saved and progress made during the quitting process. Web Coach can be used alone or in addition to phone support. Studies have found that using a tobacco Quitline can more than double a person's chances of successfully quitting tobacco.

National Alliance for Mental Health (NAMI)**Rosewood Services**

384 N. Washington

620-793-5888

Great Bend, Ks. 67530
Contact: Tammy Hammond www.rosewood.com

Saint Francis Community Services

620-793-7454

1508 Main
Great Bend, Ks. 67530

Christian-Based Recovery:

Celebrate Recovery — 6-30-8:30 p.m. Mondays at Grace Community Church, 210 McKinley St., Great Bend. The group is open to all adults, and deals with addictions and hurts, hang-ups and habits.

The Serenity Seekers, a Christian-centered 12 Step program — 7 p.m. Tuesdays at 2100 Broadway Ave., Great Bend. Call Randy, 282-2324, for more information. The group is for anyone needing help with alcohol abuse, drugs and life's troubles.

Alcoholics Anonymous:

(cl) closed (o) open (bb) big book (n/s) non-smoking (ls) literature study

A.A.: Ellinwood Group, United Church of Christ, 701 North Fritz. 620-792-4123, Thursday (o) 8 p.m.

A.A.: Grapevine Group Great Bend 1910 17th 620-786-0440, Sunday (cl) 10 a.m.; Tuesday (o, bb) 5:30 p.m.; Wednesday (cl/bb) 8 p.m.; Thursday (o) 10 a.m.; Thursday (cl) 5:30 p.m.

A.A.: Great Bend Group 1620 Hubbard (wheelchair accessible) Sunday (cl) 10:30 a.m.; Monday (cl) 10 a.m.; Monday (o) 8 p.m.; Tuesday (cl-n/s) 10 a.m.; Wednesday (cl) 10 a.m. and 5:30 p.m.; Friday (cl) 10 a.m. and 7 p.m.; Saturday (cl) 10 a.m. and 7 p.m.

A.A.: Hoisington Group 165 East First Street (wheelchair accessible) Sunday (o) 9 a.m.; Wednesday (o) 8 p.m., Saturday (cl) 8 p.m.

A.A.: Larned Town Group 504 Broadway 620-285-2656, Tuesday (o) 8 p.m.; Thursday (bb/o) 8 p.m.; Friday (cl) 8 p.m.; Saturday 8 p.m.

A.A.: Tri-County Claflin Group — City Library (Main Street)- 620-587-3944- Monday (cl) 10 a.m.

Al-Anon:

Al-Anon: Grapevine Group Great Bend — 1910 17th Tuesday 7 p.m.

Al-Anon: Great Bend Group 17th & Hubbard — 620-793-3962 Wednesday Noon; Thursday 8 p.m.; Saturday 9 a.m.; 620-793-3962;

Narcotics Anonymous:

For more information on Barton County N.A. meetings call Christa D. at 620-792-6109 (home) or 620-282-0746 (cell)

N.A.: Ellinwood “Be Prepared” Group — Fritz & A St. (Boy Scout Cabin) Tuesdays (o) 8 p.m.; Saturday (cl/candlelight) 8 p.m.

N.A.: Great Bend “Living By Faith” Group — 1910 17th, Sunday 5:30 p.m. (women); Monday 7 p.m.; Tuesday 11:30 a.m.; Friday 8 p.m.

N.A.: Hoisington “Keep It Simple” Group — 165 East First, Sunday 7 p.m.; Monday 7 p.m.; Thursday 7 p.m.

N.A. Larned “Just for Today” Group — 1st Christian Church Annex (South of Jordan Library- East side of Broadway) Sunday (o/ns) 8 p.m.; Tuesday (o/ns/l) 8 p.m.; Thursday (cl/ns) 5:30 p.m.; Friday (o/ns) 8 p.m.

Abuse support:

Family Crisis Center’s domestic violence and sexual assault support group — Thursdays from 10 to 11:30 a.m. and 6 to 7:30 p.m. Call 792-1885 or the toll-free number, 1-866-792-1885. Sexual assault support group – 6:30 to 8 p.m. Tuesdays.

Kansas Statewide Hotline: 1-888-END ABUSE

Anxiety support:

Recovery Inc. — Self-help group for people with anxiety disorders — 10 a.m. Wednesdays, St. John’s Episcopal Church, 2701 17th. Call 793-6385 or 792-4620.

Breast feeding Support:

Breastfeeding Support Group— Support group for all pregnant and breastfeeding women - meets 2nd Wednesday each month at 3:30 pm at Barton County Health Department, 1300 Kansas Ave., Great Bend. For more information call 620-793-1909.

Central Kansas Breastfeeding Coalition—A task force of the Central Kansas Partnership that encourages breastfeeding for new moms & babies, assists businesses by promoting breastfeeding friendly policies, and provides community education about benefits of breastfeeding.

Pre-Natal Breastfeeding Classes – 4th Wednesday of month (class is appropriate for pregnant women close to delivery - class covers what to expect with breastfeeding the first days and weeks after birth). Call 620-793-1909 for more information.

La Leche League of Great Bend — 6 p.m., second Thursdays, Barton County Health Department, 1300 Kansas Ave. Call Robin, (620) 617-1663, Ronda, (620) 617-6873 , or Terra, (620) 617-4403.

Cancer Support:

Heroes and Friends, cancer support group — 7 p.m., first and third Tuesdays, Presbyterian Church, Larned.

Breast Friends — Support group for breast cancer survivors — 6 p.m., third Wednesday at the Mi Tierra Restaurant, 118 E. First, Hoisington. Call (620) 653-4834 for more information.

Us Too prostate cancer support group — Meets sporadically at the St. Rose Ambulatory & Surgery Center classroom. Call Bill Terry, 792-4586, or John Smith, 793-5619.

Touched by Cancer Support Group — Every first Tuesday at 2pm and third Tuesdays at 5:15pm at Heartland Cancer Center, 204 Cleveland, Great Bend. For more information call Dana Foss, 620-617-2670.

Childhood Cancer Family Support Group — by Kans for Kids Fighting Cancer Foundation Inc. *Quarterly* meetings at the Center for Counseling and Consultation, 5815 Broadway Ave., Great Bend. For more information contact Taunya Schlessiger at 620-564-3529 or 786-5700; Gail Sullivan at The Center for Counseling, at 620-792-2544 or 793-5184; or Kristy Jerke at 792-1018.

Diabetes Support:

La Nueva Esperanza Hispanic diabetes support group — Heart of Kansas Family Health Care Inc., 1905 19th St. For more information call 792-5700.

St. Rose ASC Diabetes Support Group — By Appointment. Call Gloria at 620-786-6457.

Heart of Kansas Family Health Care Diabetes Support Group Call 792-5700 for meeting dates and times.

Divorce Support : DivorceCare — 6:30 p.m. Wednesdays at First Assembly of God Church, 601 S. Patton Road. Call 792-5211. Child care provided all ages.

Gluten-Free Support Group: Meets odd numbered months, first Monday at 5:30pm at St. Rose ASC. Call Geneva at 620-786-4265 for more information.

Grief Support: Golden Belt Home Health and Hospice Grief Support Group — Nine weekly sessions, three times a year. For information call John Grummon, (620) 792-8171, or Cathy Soeken, 786-6468.

Compassionate Friends: Families who have lost a child--Hutchinson, Dodge City, and Salina support groups in our area.

See www.compassionatefriends.org to find your nearest chapter.

Mental Health Support:

Bright Horizons, 4801 10th St., Great Bend, offers adult peer-to-peer mental health support. For more information call (620) 793-8855 or the toll-free number, (866) 793-8855. Transportation available in Barton County; call (620) 639-8851.

National Alliance for Mental Health (NAMI) 2nd Tuesdays, 7 pm at St. Rose ASC. Contact 620-617-1690 for more information.

MS Support: **Multiple Sclerosis support group** — 6:30 p.m., fourth Tuesday, Main Street Pizza Hut, Great Bend. Handicap accessible. Call (620) 792-3696.

Parenting: **Parents Helping Parents support group, for parents of children with special needs** — 6:30 to 8 p.m., second Thursday of each month, at Grace Community Church, 210 McKinley St., Great Bend. Call Beth, (620) 639-1999.

Parkinson's Support Group: Meets even numbered months, fourth Tuesday at 7pm at St. Rose ASC. Call Mark at 620-786-6136 for more information.

Visual impaired support: **Central Kansas Association Visual Impaired** — 2 p.m., fourth Sunday, 3600 Broadway, Dominican Sisters Auditorium. No August meeting. Call 792-1232 or 793-7410.

Weight loss support:

TOPS (Take Off Pounds Sensibly) No. 827 — 4:30 p.m. Mondays, Claflin Independent Township Library meeting room.

TOPS KS 248 — 9:15 a.m. Fridays, Church of Christ, 12th and Stone For more information call Pauline at 793-8998 or 1 (800) 932-8677 or e-mail Bednasek@networksplus.net.

TRANSPORTATION

Commission on Aging

2005 Kansas
Great Bend, Ks. 67530
Contact: Rosy Tomlin

620-792-3906

General Public Transportation

2005 Kansas
Great Bend, Ks. 67530

620-792-3859

Lasting Life Ministries & Life-Giving Center

2100 Broadway
Great Bend, Ks. 67530
Contact: Michell Conner

lifegivingcenter@hotmail.com

620/603-6283 office

620/282-2706 cell

Life-Giving Center

A shelter for single females or those with small children.

Mini-Bus (operated by Area Agency on Aging) **620-792-3859**
2005 Kansas
Great Bend, KS 67530
Operates Monday-Friday from 8am to 5pm

Volunteers in Action (formerly RSVP) **620-792-1614**
2012 Lakin Street
Great Bend, Ks. 67530

VIA Medical Transportation **620-792-1614**
1025 Main Street – D114
Great Bend, Ks. 67530
Contact: John Thul thula@bartonccc.edu

Sunflower Diversified Services **620-792-1321**
8823 4th Street
P.O. Box 838
Great Bend, Ks. 67530
Contact: Ladeska (Decky) Makings, COO lmakings@sunflowerdiv.com

YOUTH & FAMILY SUPPORT

20th Judicial District Court Services **620-793-1887**
1806 12th Street
Great Bend, Ks. 67530
Contact: Sabrina Chism, Chief Court Services Officer
ctservechism@cpcis.net

After School Programs
Riley Elementary School including Back Pack Program
Holy Family School
TLC – Trinity Lutheran Church

Barton County Young Men's Organization **620-792-1619**
1515 Morton
Great Bend, Ks. 67530

Barton County Youth Care **620-792-2902**
2212 Forest Ave.
Great Bend, Ks. 67530

Big Brothers Big Sisters of Central Kansas 3420 Broadway P.O. Box 505 Great Bend, Ks. 67530 www.kansasbig.org	620-793-5887
Birthright 2525 8 th St. Great Bend, Ks. 67530 Contact: Betty Schneider, Director betty.l.schneider@gmail.com	620-792-3316
Boy Scouts of America, Kanza Council Box 1766 Hutchinson, Ks. 67501	620-662-2377
Catholic Social Services 2201 16 th Street Great Bend, Ks. 67530	620-792-1393
The Center for Counseling & Consultation Children's Based Services 5815 Broadway Great Bend, Ks. 67530 Contact: Wendy Lockwood wendyl@thecentergb.org	620-792-2544
The Center for Counseling & Consultation Community Support Services 5815 Broadway Great Bend, Ks. 67530 Contact: Talaya Schwartz talayas@thecentergb.org	620-792-2544
CASA—A Child's Voice in Court 1125 Williams Great Bend, Ks. 67530 Contact: Director casa@cpcis.net	620-792-5544
Child Abuse Prevention Education	620-639-1640
Family Crisis Center 1924 Broadway Avenue (office) Box 1543 Great Bend, Ks. 67530	620-793-1965 620-792-1885 (24 Hour Crisis Line)
Flint Hills Job Corps Center 4620 Eureka Drive	785-537-7222 fax 785-564-4945

Manhattan, KS 66503

Girl Scouts of Kansas Heartland

3115 Enterprise Drive, Suite C
Salina, KS, 67401

785-827-3679

Great Bend Recreation Commission

1214 Stone Street
P.O. Box 353
Great Bend, Ks. 67530

620-793-3755

Contact: Diann Henderson dhenderson@gbrc.kscoxmail.com

Great Bend Regional Service Center – Dept. Ch. & Fam.

1305 Patton Road
Great Bend, Ks. 67530

620-792-5324

Healing Hearts Ranch

155 SE 1st Ave.
Great Bend, KS 67530
Contact: Scott Stinemetz scott@healingheartsranch.com

620-792-5173

Healthwave KanCare

P.O. Box 3599
Topeka, Ks. 66601

800-792-4884

Heartland Regional Alcohol and Drug Assessment Center (HRADAC)

800-281-0029

620-792-5324

Juvenile Services 20th Judicial District

1213 Baker
Great Bend, Ks. 67530
Contact: Laurie White, Director
lwhite@bartoncounty.net

620-793-1930

620-793-1977 (fax)

Kansas Children's Service League-Parent Helpline

Box 517
Wichita, Ks. 67201 www.kcsl.org

316-942-4261

800-332-6378
(Helpline)

Kansas Guardianship Program

3248 Kimball Ave.
Manhattan, Ks. 66503

800-672-0086

www.ksgprog.org

Kansas Quitline

1-800-QUIT-NOW

Free telephone sessions with a Quit Coach to help people quit using tobacco (smoking cigarettes, chewing tobacco, snus, etc.). English & Spanish speakers available. Call anytime day or night to get started.

The Kansas Tobacco Quitline recently added an online tobacco cessation counseling service, Web Coach®. The online service available at www.QuitNow.net/Kansas provides counseling and support materials based on individuals' readiness to quit tobacco use. The program, which is free to Kansas residents, will help tobacco users create an easy-to-follow quitting plan that will help them prepare, take action and live without tobacco.

Web Coach provides online access to highly trained cessation Coaches by live chat and e-mail. Users will also gain membership to a private, online community where they can complete activities, watch videos, and join in discussions with others in the program. Interactive trackers on the Web site measure the money saved and progress made during the quitting process. Web Coach can be used alone or in addition to phone support. Studies have found that using a tobacco Quitline can more than double a person's chances of successfully quitting tobacco

K-State Research and Extension-Barton County

620-793-1910

1800 12th St.
Great Bend, Ks. 67530

L&L Training & Consultation

620-282-1330

1901 Washington St.,
Great Bend, KS 67530

parenting4gb@att.net

LIEAP (Low Income Energy Assistance Program)

620-792-5324

Great Bend Dept. Of Ch. & Fam. Office 1305 Patton Road
Great Bend, Ks. 67530

Ext. 200

www.ks-energy-assistance.com

fax 1-620-792-5373
1-866-445-4327

Meals on Wheels

620-792-1614

For Meals on Wheels in Great Bend, Hoisington or Ellinwood, call Volunteers in Action/RSVP at 792-1833 or 792-1614.

Parent/Teacher Resource Center (PTRC)

620-793-1633

Washington School
2535 Lakin
Great Bend, KS

Prodigal Son Ministries of Kansas, Inc. (For Men only)

620-797-0185

Contacts-Mark Williams or Laura

or 620-793-9196

Regional Prevention Center of NW Kansas

785-625-5521

209 E. 7th
Hays, Ks. 67601
Contact Website: www.smokyhillfoundation.com

1-800-757-2180

Safe Haven Sites for Infants

Newborns up to 45 days old can now be safely given up by mothers to employees at Health Departments, Hospitals, Medical Facilities or Fire Departments in Kansas with no consequences or abandonment charges. This new program ensures the safety and health of newborns. **In Kansas, no one ever has to abandon a child again.**

Saint Francis Community Services

620-793-7454

1508 Main
Great Bend, Ks. 67530

Sandstone Bridge Center

620-603-6022

3520 Lakin Avenue, Suite 105
Great Bend, KS

Social Security Administration

620-663-8341

811 E. 30th St., Suite A
Hutchinson, KS 67502

www.socialsecurity.gov

1-877-846-8333

Sunflower Early Education Center (EEC)

620-792-4087

1312 Patton Road
Great Bend, Ks. 67530
Contact: Cathy Estes, Coordinator cestes@sunflowerdiv.com

800-692-4087

Teen Court

620-793-1930

1213 Baker
Great Bend, KS 67530

United Way of Central Kansas

620-792-2403

1125 Williams
Great Bend, Ks. 67530
Contact: Julie Smith
unitedwaycentralks@hotmail.com

USD 428 Parents As Teachers Consortium

620-793-1500

Riley Elementary School
1515 10th Street
Great Bend, Ks. 67530

620-793-1506

Youthfriends Kansas

620-793-1500

201 Patton Rd.
Great Bend, Ks. 67530
Contact: Michelle Daniel, USD 428 Coordinator
www.youthfriends.org

620-793-1544 fax

KanCare/Medicaid Outstation Eligibility Staff and Locations

Garden City - Bricia Espino
United Methodist Mex-Amer. Health Ministry
712A St. John Street
Garden City, KS 67846
Hours: Mon. - Thur., 8 a.m. - 5 p.m.
Fri., 8:30 a.m. - 4 p.m.

Great Bend - Patricia Satterlee
Heart of Kansas Family Healthcare
1905 19th Street
Great Bend, KS 67530
Hours: Mon. - Fri. 8 a.m. - 5 p.m.

Hays - Brandy Ney
First Care Clinic
105 W. 13th St.
Hays, KS 67601
Hours: Mon. - Fri. 8 a.m. - 5 p.m.

Hutchinson - Cindy Proett
PrairieStar Health Center
1600 N. Lorraine, Suite 110
Hutchinson, KS 67501
Hours: Mon. - Fri., 7:30 a.m. - 4 p.m.

Independence - Debbie Dunlap
Mercy Hospital
800 W. Myrtle
Independence, KS 67301
Hours: Mon. - Fri., 8 a.m. - 5 p.m.

Junction City/Manhattan - Kate Steeves
Konza Prairie Comm. Health Ctr.
361 Grant Ave., PO Box 1107
Junction City, KS 66441
Hours: Mon. 8 a.m. - 6 p.m.
Tues., Wed., Thur. 8 a.m. - 5:30 p.m.
Fri. 8 a.m. - noon
Konza Prairie Comm. Dental Clinic
2030 Tecumseh Rd.
Manhattan, KS 66502
Tues. or Thurs., 7:30 a.m. - 4:30 p.m.

Kansas City - Ruth Becker
Turner House Children's Clinic
21 N. 12th St., Suite 300
Kansas City, KS 66102
Center Hours: Mon. Wed., Fri., 8 a.m. - 5 p.m.
Tues., Thurs. 8 a.m. - 8 p.m.
Sat. 8 a.m. - noon
Silver City Health Center
1428 S. 32nd St., Suite 100
Kansas City, KS 66106
Center Hours: Mon. - Fri., 8 a.m. - 5 p.m.

Liberal - Teresa Flores
United Methodist Mex-Amer. Health Ministry
311 North Grant Ave.
Liberal, KS 67901
Hours: Mon. - Thur. 8:30 a.m. - noon; 1 - 5 p.m.
Fri. 8 a.m. - 4 p.m.

Salina - Wanda Esping
Salina Family Healthcare Center
651 E. Prescott
Salina, KS 67401
Hours: Mon., Tues., Thur., Fri. 8 a.m. - 5 p.m.
Saline County Health Department
125 W. Elm
Salina, KS 67401
Hours: Wed. 8 a.m. - 4:30 p.m.

Topeka - Mimi Leonard
Shawnee County Health Agency
1615 SW 8th Ave.
Topeka, KS 66606
Hours: M, W, Th., Fri. 8 a.m. - 5 p.m.; Tues. 10 a.m. - 7 p.m.

Wichita - Sandra Zeh
Wichita Public Schools
201 N Water, 2nd Floor
Wichita, KS 67202
Hours: Mon - Fri 8:30 a.m. - 5 p.m.

V. Detail Exhibits

[VVV Research & Development, LLC]

Patient Origin & Access

[VWV Research & Development, LLC]

#	KS Hospital Assoc PO103	Barton County KS IP			TREND
		FFY2012	FFY2013	FFY2014	
1	Total Discharges	1692	1620	1611	
2	Total IP Discharges-Age 0-17 Ped	83	77	79	
3	Total IP Discharges-Age 18-44	181	164	165	
4	Total IP Discharges-Age 45-64	430	434	378	
5	Total IP Discharges-Age 65-74	263	310	272	
6	Total IP Discharges-Age 75+	513	394	421	
7	Psychiatric	66	74	60	
8	Obstetric	76	88	120	
9	Surgical %	29.8%	31.1%	29.5%	
#	KS Hospital Assoc PO103	Ellinwood Disrict Hospital Only			TREND
		FFY2012	FFY2013	FFY2014	
1	Total Discharges	124	129	115	
2	Total IP Discharges-Age 0-17 Ped	4	9	5	
3	Total IP Discharges-Age 18-44	8	9	6	
4	Total IP Discharges-Age 45-64	27	24	17	
5	Total IP Discharges-Age 65-74	22	23	26	
6	Total IP Discharges-Age 75+	56	52	56	
7	Psychiatric	7	12	5	
8	Obstetric	0	0	0	
9	Surgical %	0.8%	NA	NA	
#	Kansas Hospital AssocOP TOT223E	FFY2012	FFY2013	FFY2014	TREND
2	ER Market Share	13.3%	16.1%	15.5%	
4	OPS Market Share	18.2%	18.5%	19.9%	
6	Total OP Market Share	10.6%	10.0%	10.8%	

Town Hall Attendees Notes & Feedback

[VVV Research & Development, LLC]

Barton County, KS Town Hall Roster N=39

Date: 03/19/15

First	Last	Organization	Address	City	ST	ZIP
Garry	Dassow	Community Leader	614 E 3rd St.	Hoisington	KS	67544
Don	Davis	Barton County Commissioner (District 3)	1400 Main St., Room 107	Great Bend	KS	67530
IRLAN	FULLBRIGHT	CITY OF ELLINWOOD	104 E. 2ND ST.	ELLINWOOD	KS	67526
Angela	Hammeke		410 N Wilhelm	Ellinwood	KS	67526
LLOYD	KURTZ	CHAMBER OF COMMERCE	110 1/2 N. MAIN	ELLINWOOD	KS	67526
Mark	MINGENBACK	ST.ROSE AMBULATORY	3515 BROADWAY	Great Bend	KS	67530
Karen	Mitchell	D.S. & W. Well Servicing	1822 24th St.	Great Bend	KS	67530
Missy	Pflughoeft	Country Place Senior Living	259 W 6th	Hoisington	KS	67544
Shelly	Schneider	Barton County Health Department	1300 Kansas Avenue	Great Bend	KS	67530
JOE	SCHULTE	GIFTS OF THE GARDEN	111 N. MAIN	ELLINWOOD	KS	67526
JOYCE	SCHULTE	ELLINWOOD BOOK CLUB	401 E. 2ND	ELLINWOOD	KS	67526
KAREN	SESSLER	ELDERCARE, INC	1819 11TH	GREAT BEND	KS	67530
Penny	Stephenson	Ellinwood Hospital	505 E 3rd	Ellinwood	KS	67526
Jan	Westfall	Gentiva Home Health	1117 N. Washington	Great Bend	KS	67530
Clayton	Williamson	Hoisington Mayor	272 W 6th	Hoisington	KS	67544
Teddy	Williamson	Community Leader	272 W 6th St	Hoisington	KS	67544
Kayla	Winder	Ellinwood Hospital & Clinics	605 North Main St	Ellinwood	KS	67526
Diane	McReynolds	Ellinwood Hospital & Clinics	611 N MAIN	Ellinwood	KS	67526
Jim	Blackwell	Clara Barton Hospital	250 W 9th St.	Hoisington	KS	67544
Karen	VanBrimmer	Hoisington Dispatch	552 W. 5th St.	Hoisington	KS	67545
Rose	Knojs		107 Wilhelme	Ellinwood	KS	67526
Marilyn	Frydendall	Ellinwood Hospital Auxiliary	800 N Humbolt	Ellinwood	KS	67526
Joyce	Burress	Ellinwood Hospital Auxiliary	410 E 5th	Ellinwood	KS	67526
Jay	Schlocktermeisr	Ellinwood Hospital Auxiliary	517 SE 80th Ave	Ellinwood	KS	67526
Rosalyn	Borchers	Ellinwood Hospital	108 W 11th	Ellinwood	KS	67526
Julie	Smith	United Way of Central Kansas	1125 Williams	Great Bend	KS	67530
Karen	Brauer	Ellinwood Hospital	200 N Wilhelm Ave	Ellinwood	KS	67526
Pastor Jennifer	Fair	Immanuel United Church of Christ	629 N Fritz Ave	Ellinwood	KS	67526
Richard	Connell	UMC	Box 241	Clafin	KS	
Curt	Colson	Ellinwood Great Plains Health Alliance	605 North Main St	Hoisington	KS	67544
Pat	Orwald	Private Citizen Refined	1917 Elm St	Beamer	KS	67525
Janel	Rose	Barton County Health Department	1300 Kansas Avenue	Great Bend	KS	67530
Beverly	Frizell	Barton County Health Department	1300 Kansas Avenue	Great Bend	KS	67530
Vencette	Madaren	County Place Senior Living	126 SE 10 Rd	Great Bend	KS	67530
Leanne	Irsik	St. Rose Health Center	3515 BROADWAY	Great Bend	KS	67530
Gaila	Nielson	ELDERCARE, INC	PO Box 1364	Great Bend	KS	67530
Kile	Magner	Ellinwood Hospital				
Kayla	Winder	Ellinwood Hospital				

Barton County Community Health Needs Assessment Meeting
03.19.15
n= 39

- Several providers in the room working with patients
- A few farmers/business owners
- A few City Chamber of Commerce/County Commissioners
- Several parents/taking care of seniors
- No School people
- Physical Environment includes is pollution of water or air, insecticides in this community
- Ellinwood Fitness Center is opening next month
- St. Rose and Hays Med are partnering
- Barkley Grain is coming to town
- The Medicaid expansion issue will be a big factor as well

TAB 1: Demographic Profile

- Veteran's going to Hays or Hutchinson for care
- Have the Arch Program at St. Rose
 - Has been modified to 40 miles instead of 60 miles

TAB 2: Economic/Business Profile

- SNAP- Supplemental Nutritional Assistance Program is high, don't want this to be green. The more you have is bad.

TAB 3: Educational Profile

- Eligible for school lunch program should be red, not green.
- They say they have more updated statistics that she will send us

TAB 7: Risk Factors and Indicators

- Probably should make obesity a red
- Also should make smoking a red

TAB 8: Uninsured Profile

- 20% is still pretty high for Obamacare making it law

TAB 9: Mortality Profile

- Infant mortality drastically higher than norm

STRENGTHS:

- Health Department
- More up to date equipment at Clara Barton
- Stable medical staff at both facilities

- New wellness center in Ellinwood
- Local hospitals
- Walking bus for the children in Hoisington and Great Bend
- Good citizen involvement
- Ellinwood ER
- Both facilities have a strong community following
- Good staffing, doctors, and nurses
- EMS in Hoisington
- Better sidewalks for the kids in Hoisington
- Gold Belt Community Foundation in Barton County
- Ellinwood employer DOT drug testing
- Fitness facilities, walking trails in Hoisington
- School lunch programs
- Lab fairs
- Physical therapy for Clara Barton
- Ellinwood offers summer lunch program, no income/age restrictions
- Media is supportive of health in Barton County
- Youth rec activities
- Specialists coming into our community

WEAKNESSES:

- Specialists (Podiatry, Dermatology) in Hoisington
- Infant Mortality/prenatal care
- Communication of process changes to community
- Tobacco use
- Senior physical activity/price
- Caregiver support
- Updated hospital/clinic in Ellinwood
- Ambulance staffing in Ellinwood
- Economic development
- Workers comp communication
- Youth activities to keep healthy
- Immunization rates
- Uninsured
- Assessment/placement for mental health
- Suicide prevention
- Obesity (eating/exercise)
- Child care services
- Substance abuse education
- Sex education in school
- Teenage pregnancy
- Diabetic education
- Pharmacy in Ellinwood
- Unmarried mothers

Public Notice & Invitation

[VVV Research & Development, LLC]

Round #2 Community Health Needs Assessment – Ellinwood District Hospital

Media Release 02/26/2015

Over the next three months, Ellinwood District Hospital will be updating the 2012 Barton County Community Health Needs Assessment (CHNA). (Note: This assessment update is a follow-up to meet final IRS regulations released on 01/02/2015, requiring all 501(c)(3) hospitals to conduct a community health needs assessment and adopt an implementation strategy at least once every three years).

The goal of this assessment update is to understand progress in addressing community needs cited in the 2012 report and to collect up-to-date community health care perceptions. To accomplish this work, a short online survey has been developed:

<https://www.surveymonkey.com/s/Barton2015>

“We hope our local community will take advantage of this opportunity to provide input into the future of healthcare delivery,” comments Penny Stephenson, CFO.

All community residents and business leaders are encouraged to complete the online 2015 CHNA survey and to attend the upcoming Town Hall dinner on March 19th from 5:30-7pm at Immaculate Conception Parish Hall, Clalfin, KS. VVV Research & Development LLC, an independent research firm from Olathe, Kansas has been retained to conduct this countywide research.

If you have any questions about CHNA activities, please call 620-564-2548.

From: CFO

Date: February 2015

To: Community Leaders, Providers and Hospital Board and Staff

Subject: CHNA Round #2 Online Survey 2015

Ellinwood District Hospital is partnering with other community health providers to update the 2012 Community Health Needs Assessment. (*Note:* This assessment update is a follow-up to meet final IRS regulations released on 01/02/2015, requiring all 501(c)(3) hospitals to conduct a Community Health Needs Assessment and adopt an implementation strategy at least once every three years).

Your feedback and suggestions regarding community health delivery are very important to collect in order to complete the 2015 Community Health Needs Assessment and implementation plan updates.

To accomplish this work, a short online survey has been developed:

<https://www.surveymonkey.com/s/Barton2015>

CHNA Round #2 due date for survey completion is Tuesday, February 24th. All responses are confidential. Thank you in advance for your time and support in participating with this important request.

Sincerely,
Penny Stephenson
CFO



Community Health Needs Assessment

Barton County, KS Community Town Hall Meeting

Clara Barton Hospital, Ellinwood District Hospital
and Barton County Public Health
will be hosting a
Town Hall Meeting on March 19th, 2015
from 5:30 to 7:00 p.m.
at Immaculate Conception Parish, Claflin, KS

Public is invited to attend.
A light lunch will be provided

Please join us for this opportunity to share your opinions
and suggestions to improve health care delivery
in Barton County, KS.

Thank you in advance for your participation.

Detail Primary Research Primary Service Area

[VVV Research & Development, LLC]

CHNA Respondent Demographics

CHNA Round #2 Feedback 2015 - NORMS			
9. For reporting purposes, are you involved in or are you a	NW Alliance (Opt C 8) %	Ellinwood only N=37	Trend
Board Member -Local	1.7%	7.0%	
Business / Merchant	2.3%	5.8%	
Case Manager / Discharge	0.2%	1.2%	
Civic Club / Chamber	1.9%	9.3%	
Charitable Foundation	1.3%	7.0%	
Clergy / Congregational Leader	0.4%	0.0%	
College / University	0.5%	0.0%	
Consumer Advocate	0.4%	1.2%	
Consumers of Health Care	3.5%	8.1%	
Dentist	0.0%	0.0%	
Economic Development	0.6%	3.5%	
Education Official / Teacher	3.5%	1.2%	
Elected Official - City / County	0.8%	2.3%	
EMS / Emergency	0.4%	1.2%	
Farmer / Rancher	1.7%	5.8%	
Health Department	0.6%	0.0%	
Hospital	5.1%	10.5%	
Housing / Builder	0.2%	0.0%	
Insurance	0.4%	1.2%	
Labor	0.6%	1.2%	
Law Enforcement	0.2%	0.0%	
Low Income / Free Clinics	0.3%	1.2%	
Mental Health	0.8%	2.3%	
Nursing	3.7%	4.7%	
Other Health Professional	1.9%	4.7%	
Parent / Caregiver	5.5%	10.5%	
Pharmacy	0.2%	0.0%	
Physician (MD / DO)	0.0%	0.0%	
Physician Clinic	0.6%	2.3%	
Press (Paper, TV, Radio)	0.1%	1.2%	
Senior Care / Nursing Home	0.4%	1.2%	
Social Worker	0.2%	0.0%	
Veteran	0.9%	3.5%	
Welfare / Social Service	0.0%	0.0%	
Other (Please note below)	1.4%	2.3%	
TOTAL	100.0%	100.0%	

Let Your Voice Be Heard!

This Community Health Needs Assessment is being conducted in partnership with other area health providers. Feedback from this survey will identify current health issues in our community. Participation is voluntary and all answers will be kept confidential.

All CHNA Round #2 feedback is due by Tuesday, February 24, 2015. Thank you for your participation.

Part I: Introduction

1. Three years ago a Community Health Needs Assessment was completed. This assessment identified a number of health needs for our community. Today we are updating this assessment and would like to know how you rate the "Overall Quality" of healthcare delivery in our community?

	Very Good	Good	Fair	Poor	Very Poor
Health Rating	<input type="radio"/>	<input type="radio"/>	<input type="radio"/>	<input type="radio"/>	<input type="radio"/>

2. Are there healthcare services in your community / neighborhood that you feel need to be improved and / or changed? (Please be specific)

3. From our last Community Health Needs Assessment (2012), a number of health needs were identified as a priority. Are any of these 2012 CHNA needs still an "ongoing problem" in our community?

	Not a problem anymore	Somewhat of a Problem	Major Problem
Access to Care (underinsured)	<input type="radio"/>	<input type="radio"/>	<input type="radio"/>
Behavioral / Substance Abuse	<input type="radio"/>	<input type="radio"/>	<input type="radio"/>
Community Awareness of Services	<input type="radio"/>	<input type="radio"/>	<input type="radio"/>
Teenage pregnancy	<input type="radio"/>	<input type="radio"/>	<input type="radio"/>
Diabetic Education	<input type="radio"/>	<input type="radio"/>	<input type="radio"/>
Economic Development	<input type="radio"/>	<input type="radio"/>	<input type="radio"/>
EMS coverage	<input type="radio"/>	<input type="radio"/>	<input type="radio"/>
Infant-care, new mom education	<input type="radio"/>	<input type="radio"/>	<input type="radio"/>
HC Transportation	<input type="radio"/>	<input type="radio"/>	<input type="radio"/>
Heart Health	<input type="radio"/>	<input type="radio"/>	<input type="radio"/>
Hospital facilities / equipment upgrades	<input type="radio"/>	<input type="radio"/>	<input type="radio"/>
Lack of childcare options	<input type="radio"/>	<input type="radio"/>	<input type="radio"/>
Mental Health services	<input type="radio"/>	<input type="radio"/>	<input type="radio"/>
Obesity / Fitness	<input type="radio"/>	<input type="radio"/>	<input type="radio"/>
Local pharmacy services.	<input type="radio"/>	<input type="radio"/>	<input type="radio"/>
Seniors Services	<input type="radio"/>	<input type="radio"/>	<input type="radio"/>
Substance abuse education	<input type="radio"/>	<input type="radio"/>	<input type="radio"/>
Teen Pregnancy Rate	<input type="radio"/>	<input type="radio"/>	<input type="radio"/>
Wellness / Preventative Care	<input type="radio"/>	<input type="radio"/>	<input type="radio"/>

4. Which 2012 CHNA health needs are most pressing TODAY for improvement? (Please Check Top 3 Needs)

- | | |
|--|---|
| <input type="checkbox"/> Access to Care (underinsured) | <input type="checkbox"/> Hospital facilities / equipment upgrades |
| <input type="checkbox"/> Behavioral / Substance Abuse | <input type="checkbox"/> Lack of childcare options |
| <input type="checkbox"/> Community Awareness of Services | <input type="checkbox"/> Mental Health services |
| <input type="checkbox"/> Teenage pregnancy | <input type="checkbox"/> Obesity / Fitness |
| <input type="checkbox"/> Diabetic Education | <input type="checkbox"/> Local pharmacy services. |
| <input type="checkbox"/> Economic Development | <input type="checkbox"/> Seniors Services |
| <input type="checkbox"/> EMS coverage | <input type="checkbox"/> Substance abuse education |
| <input type="checkbox"/> Infant-care, new mom education | <input type="checkbox"/> Teen Pregnancy Rate |
| <input type="checkbox"/> HC Transportation | <input type="checkbox"/> Wellness / Preventative Care |
| <input type="checkbox"/> Heart Health | |

5. How would our community rate each of the following ? (Check one box per row)

	Very Good	Good	Fair	Poor	Very Poor	N/A
Ambulance Services	<input type="radio"/>	<input type="radio"/>	<input type="radio"/>	<input type="radio"/>	<input type="radio"/>	<input type="radio"/>
Child Care	<input type="radio"/>	<input type="radio"/>	<input type="radio"/>	<input type="radio"/>	<input type="radio"/>	<input type="radio"/>
Chiropractors	<input type="radio"/>	<input type="radio"/>	<input type="radio"/>	<input type="radio"/>	<input type="radio"/>	<input type="radio"/>
Dentists	<input type="radio"/>	<input type="radio"/>	<input type="radio"/>	<input type="radio"/>	<input type="radio"/>	<input type="radio"/>
Emergency Room	<input type="radio"/>	<input type="radio"/>	<input type="radio"/>	<input type="radio"/>	<input type="radio"/>	<input type="radio"/>
Eye Doctor / Optometrist	<input type="radio"/>	<input type="radio"/>	<input type="radio"/>	<input type="radio"/>	<input type="radio"/>	<input type="radio"/>
Family Planning Services	<input type="radio"/>	<input type="radio"/>	<input type="radio"/>	<input type="radio"/>	<input type="radio"/>	<input type="radio"/>
Home Health	<input type="radio"/>	<input type="radio"/>	<input type="radio"/>	<input type="radio"/>	<input type="radio"/>	<input type="radio"/>
Hospice	<input type="radio"/>	<input type="radio"/>	<input type="radio"/>	<input type="radio"/>	<input type="radio"/>	<input type="radio"/>

6. How would our community rate of the following? (Check one box per row) CONT...

	Very Good	Good	Fair	Poor	Very Poor	N/A
Inpatient Services	<input type="radio"/>	<input type="radio"/>	<input type="radio"/>	<input type="radio"/>	<input type="radio"/>	<input type="radio"/>
Mental Health Services	<input type="radio"/>	<input type="radio"/>	<input type="radio"/>	<input type="radio"/>	<input type="radio"/>	<input type="radio"/>
Nursing Home	<input type="radio"/>	<input type="radio"/>	<input type="radio"/>	<input type="radio"/>	<input type="radio"/>	<input type="radio"/>
Outpatient Services	<input type="radio"/>	<input type="radio"/>	<input type="radio"/>	<input type="radio"/>	<input type="radio"/>	<input type="radio"/>
Pharmacy	<input type="radio"/>	<input type="radio"/>	<input type="radio"/>	<input type="radio"/>	<input type="radio"/>	<input type="radio"/>
Primary Care	<input type="radio"/>	<input type="radio"/>	<input type="radio"/>	<input type="radio"/>	<input type="radio"/>	<input type="radio"/>
Public Health Dept.	<input type="radio"/>	<input type="radio"/>	<input type="radio"/>	<input type="radio"/>	<input type="radio"/>	<input type="radio"/>
School Nurse	<input type="radio"/>	<input type="radio"/>	<input type="radio"/>	<input type="radio"/>	<input type="radio"/>	<input type="radio"/>
Visiting Specialists	<input type="radio"/>	<input type="radio"/>	<input type="radio"/>	<input type="radio"/>	<input type="radio"/>	<input type="radio"/>

7. Over the past two years, did you or do you know someone who received health care services outside of our community?

- ☐ Yes
☐ No
☐ Don't know

If yes, please specify the healthcare services received

8. Are there any other health needs (from list below) that we need to discuss at our upcoming CHNA Town Hall meeting? Please check ALL that "need to be on our agenda".

- | | | |
|--|--|---|
| <input type="checkbox"/> Abuse / Violence | <input type="checkbox"/> Mental Illness | <input type="checkbox"/> Suicide |
| <input type="checkbox"/> Alcohol | <input type="checkbox"/> Nutrition | <input type="checkbox"/> Teen Pregnancy |
| <input type="checkbox"/> Cancer | <input type="checkbox"/> Obesity | <input type="checkbox"/> Tobacco Use |
| <input type="checkbox"/> Diabetes | <input type="checkbox"/> Ozone (Air) | <input type="checkbox"/> Vaccinations |
| <input type="checkbox"/> Drugs / Substance Abuse | <input type="checkbox"/> Physical Exercise | <input type="checkbox"/> Water Quality |
| <input type="checkbox"/> Family Planning | <input type="checkbox"/> Poverty | <input type="checkbox"/> Wellness Education |
| <input type="checkbox"/> Heart Disease | <input type="checkbox"/> Respiratory Disease | <input type="checkbox"/> Some Other Need (please specify below) |
| <input type="checkbox"/> Lead Exposure | <input type="checkbox"/> Sexual Transmitted Diseases | |

Other (please specify)

Demographics

9. For reporting purposes, are you involved in or are you a (Check all that apply)

- | | | |
|---|---|---|
| <input type="checkbox"/> Board Member -Local | <input type="checkbox"/> Elected Official - City / County | <input type="checkbox"/> Other Health Professional |
| <input type="checkbox"/> Business / Merchant | <input type="checkbox"/> EMS / Emergency | <input type="checkbox"/> Parent / Caregiver |
| <input type="checkbox"/> Case Manager / Discharge | <input type="checkbox"/> Farmer / Rancher | <input type="checkbox"/> Pharmacy |
| <input type="checkbox"/> Civic Club / Chamber | <input type="checkbox"/> Health Department | <input type="checkbox"/> Physician (MD / DO) |
| <input type="checkbox"/> Charitable Foundation | <input type="checkbox"/> Hospital | <input type="checkbox"/> Physician Clinic |
| <input type="checkbox"/> Clergy / Congregational Leader | <input type="checkbox"/> Housing / Builder | <input type="checkbox"/> Press (Paper, TV, Radio) |
| <input type="checkbox"/> College / University | <input type="checkbox"/> Insurance | <input type="checkbox"/> Senior Care / Nursing Home |
| <input type="checkbox"/> Consumer Advocate | <input type="checkbox"/> Labor | <input type="checkbox"/> Social Worker |
| <input type="checkbox"/> Consumers of Health Care | <input type="checkbox"/> Law Enforcement | <input type="checkbox"/> Veteran |
| <input type="checkbox"/> Dentist | <input type="checkbox"/> Low Income / Free Clinics | <input type="checkbox"/> Welfare / Social Service |
| <input type="checkbox"/> Economic Development | <input type="checkbox"/> Mental Health | <input type="checkbox"/> Other (Please note below) |
| <input type="checkbox"/> Education Official / Teacher | <input type="checkbox"/> Nursing | |

Other (please specify)

*10. What is your home zip code?

You have just completed the Community Health Needs Assessment Survey. Thank you for your participation. By hitting "Next" you are submitting your responses and giving others an opportunity to complete the same survey.

Again, thank you for your participation.

KEY - CHNA Open End Comments			
Code	HC Themes	Code	HC Themes
VIO	Abuse / Violence	EMRM	Emergency Room
ACC	Access to Care	EMS	EMS
AGE	Aging (Senior Care / Assistance)	EYE	Eye Doctor / Optometrist
AIR	Air Quality	FAC	Facility
ALC	Alcohol	FAM	Family Planning Services
ALT	Alternative Medicine	FEM	Female (OBG)
ALZ	Alzheimers	FINA	Financial Aid
AMB	Ambulance Service	FIT	Fitness / Exercise
ASLV	ASSISTED LIVING	ALL	General Healthcare Improvement
AUD	Auditory	GEN	General Practioner
BACK	Back / Spine	GOV	Government
BD	Blood Drive	HRT	Heart Care
BRST	Breastfeeding	HEM	Hematologist
CANC	Cancer	HIV	HIV / AIDS
CHEM	Chemotherapy	HH	Home Health
KID	Child Care	HSP	Hospice
CHIR	Chiropractor	HOSP	Hospital
CHRON	Chronic Diseases	MAN	Hospital Management
CLIN	Clinics (Walk-in etc.)	INFD	INFIDELITY
COMM	Communication	IP	Inpatient Services
CORP	Community Lead Health Care	LEAD	Lead Exposure
CONF	CONFIDENTIALITY	BIRT	Low Birth Weight
DENT	DENTIST	LOY	LOYALTY
DENT	Dentists	MAMO	Mammogram
DIAB	Diabetes	MRKT	MARKETING
DIAL	Dialysis	STFF	Medical Staff
DUP	Duplication of Services	BH	Mental Health Services
ECON	Economic Development	MDLV	MID-LEVELS
	HC Themes	SANI	Sanitary Facilities
NURSE	More Nurse Availability	SNUR	School Nurse
NEG	Neglect	STD	Sexually Transmitted Diseases
NP	NURSE PRACTIONER	SMOK	Smoking
NH	Nursing Home	SS	Social Services
NUTR	Nutrition	SPEC	Specialist Physician care
OBES	Obesity	SPEE	Speech Therapy
ORAL	Oral Surgery	STF	STAFFING
ORTHOD	ORTHODONTIST	STRK	Stroke
OTHR	Other	DRUG	Substance Abuse (Drugs / Rx)
OP	Outpatient Services/Surgeries	SUIC	Suicide
OZON	Ozone	SURG	SURGERY
PAIN	Pain Management	TPRG	Teen Pregnancy
PARK	PARKING	TEL	TELEMEDICINE
PHAR	Pharmacy	THY	Thyroid
DOCS	Physicians	TOB	Tobacco Use
FLU	Pneumonia / Flu	TRAN	Transportation
FOOT	Podiatrist	TRAU	Trauma
POD	PODIATRIST	TRAV	TRAVEL
POV	Poverty	ALCU	Underage Drinking
PNEO	Prenatal	INSU	Uninsured/Underinsured
PREV	Preventative Healthcare	URG	Urgent Care/After Hours Clinic
PRIM	Primary Care:	VACC	Vaccinations
PROS	Prostate	VETS	VETERANS CARE
DOH	Public Health Department	WAG	Wages
QUAL	Quality of care	WAIT	Wait Times
REC	Recreation	H2O	Water Quality
RESP	Respiratory Disease	WELL	Wellness Education/Health Fair
NO	Response "No Changes," etc.	WIC	WIC Program

CHNA Round #2 Community Feedback 2015 -Barton Co KS N=199

ID	ZIP	City	c1	c2	c3	Are there healthcare services in your community / neighborhood that you feel need to be improved and / or changed?
1121	67530	GREAT BEND	ACC	SPEC-RAD		Need full-time ultrasound coverage Need closer access to an open MRI
1086	67526	ELLINWOOD	AGE	SPEC-GER		The need for specific care for older adults - gerontology specialist would be beneficial to the Barton County area. As opposed to the "family doc", our senior adults need to have health care providers that can monitor the needs and assess progress.
1007	67544	HOISINGTON	ALZ	OP	IP	Having more respite care programs with reasonable cost.
1020	67530	GREAT BEND	AMB	TRAN		Availability of ambulance service when a patient needs to be transferred.
1116	67526	ELLINWOOD	BH			We need more mental health options.
1168	67554	LYONS	BH	HSP		mental health and hospice care
1052	67525	CLAFLIN	COMM	QUAL	SPEC-RAD	Better follow up. I had an x-ray done and I never heard back. I understand if it was severe I'm sure I would have received a call. A simple letter in the mail stating what was done and that nothing was found would have sufficed.
1043	67526	ELLINWOOD	COMM	FAC	OTHR	Better advertising for ellinwood services
1072	67526	ELLINWOOD	COMM	FAC	OTHR	Ellinwood health services need to be better marketed.
1069	67526	ELLINWOOD	DOCS	GEN	ACC	Drs that can provide you service instead of always being referred to a specialist.
1019	67526	ELLINWOOD	DOCS	OTHR		good/quality doctors with updated facility
1104	67526	ELLINWOOD	DOCS	SPEC	ACC	greater access to specialists
1095	67526	ELLINWOOD	DOCS			More outreach Physicians to set up a local office throughout the month.
1176	67530	GREAT BEND	DOCS	QUAL	GEN	bring in doctors that will stay and become part of our community, and can take care of patients for a long time, that way patients can feel more secure
1178	67530	GREAT BEND	DOCS	SPEC-OBG	WELL	More physicians providing services for women's health.
1122	67544	HOISINGTON	DOCS	DENT	FINA	better and full time doctors free or reduced care including dental for low income people
1184	67544	HOISINGTON	DOCS	INSU	WELL	REPUTABLE MD'S AND NOT DO'S. MORE ASSISTED LIVING CENTERS THAT WOULD ACCEPT MEDICAID PATIENTS. MORE EMPHASIS ON DIET, EXERCISE AND ONE ON ONE CONSULTS WITH QUALIFIED PROFESSIONALS FOR CHRONIC ILLNESS, HIGH BLOOD PRESSURE, DIABETES, ARTHRITIS, ETC.
1062	67544	HOISINGTON	DOCS	ACC		Would like to see more physicians from Hays Hospital come to Clara Barton Hospital. Some local physicians rarely do a physical exam on patients, e.g. complaints of abdominal pain and the abdomen is not assessed.
1117	67530	GREAT BEND	EMRM	FINA	INSU	ER visits need not be such a rip off.
1162	67544	HOISINGTON	EMRM	OTHR		We need more acute care beds and ER beds in the surrounding community. CBH and GBRH doesn't have enough.
1041	NA	NA	EMRM	FAC		Need better E R docs in hoisington hospital .
1152	67525	CLAFLIN	FAC	OTHR		I think Clara Barton does a good job of providing healthcare services to the community.
1029	67525	CLAFLIN	FAC	OTHR		They need more up to date equipment. With the advent of technology these facilities are in the dark ages. They can send you too a larger clinic or hospital, but cannot preform all treatments on you.
1049	67526	ELLINWOOD	FAC	DOCS	OTHR	This proposed merger would save me and many others trips to CB in Hoisington to see Debra Brockel.
1128	67530	GREAT BEND	FAC	OTHR		The early morning walk in clinic is a needed upgrade
1173	67565	OTIS	FAC	QUAL	OTHR	I think healthcare services in Hoisington are very good, But Great Bend providers need to work together and stop the feud between the facilities there.
1070	67530	GREAT BEND	HOSP	FAC	OTHR	ellinwood district hospital/clinic
1006	67530	GREAT BEND	HOSP	IP		The area seems to be in need of more Hospital beds.

CHNA Round #2 Community Feedback 2015 -Barton Co KS N=199

ID	ZIP	City	c1	c2	c3	Are there healthcare services in your community / neighborhood that you feel need to be improved and / or changed?
1144	67530	GREAT BEND	HOSP	FAC	ACC	Yes, the coordination of care in Barton County is marginal at best. Great Bend Regional Hospital sends most medical cases to other larger out of county facilities. Patients have complained about beds not be available for medical needs, only to learn that the beds were reserved for elective surgery patients.
1181	67530	GREAT BEND	INSU	OTHR		Increase number of pt's who need wound care but they don't have or don't want insurance that covers that services so the hospital has to eat it ! All patients were to have some type of insurance with the new ObamaCare but they are finding out it doesn't cover what they need.
1089	67530	GREAT BEND	INSU			There are quite a few people in the community that are either uninsured or under insured
1147	67530	GREAT BEND	IP	QUAL	OTHR	patient bedding needs to be changed every day
1157	67544	HOISINGTON	NUTR	AGE	CHRON	MORE SERVICES FOR THE ELDERLY SUCH AS ASSISTED LIVING PLACES. MORE HELP WITH CHRONIC DISEASES. A PLACE TO GET HEALTHIER FOOD OPTIONS NON GMO, ORGANIC, ETC, , BOTH TO EAT OUT AND TO PURCHASE.
1025	67526	ELLINWOOD	OTHR			no
1082	67530	GREAT BEND	OTHR			no
1153	67530	GREAT BEND	OTHR			No I think we have great healthcare services in our community
1085	67530	GREAT BEND	OTHR			They need to be more caring instead of just trying to impress their students
1175	67530	GREAT BEND	OTHR			Think our healthcare services is doing very well in trying to give the community what they need and feel it will grow even more in the future.
1012	67544	HOISINGTON	OTHR			no
1060	67544	HOISINGTON	OTHR			no
1136	67544	HOISINGTON	OTHR			no
1137	67544	HOISINGTON	OTHR			no
1138	67544	HOISINGTON	OTHR			no
1188	67544	HOISINGTON	OTHR			No
1031	67544	HOISINGTON	OTHR			No I'm happy with everything
1058	67544	HOISINGTON	OTHR			No need for improvement here in Hoisington. Clara Barton Hospital and Clinic provides excellent medical services. On any day you can find patients from as far away as 60-80 miles.
1009	67544	HOISINGTON	OTHR			No, not at this time.
1146	67544	HOISINGTON	OTHR			No. I think the healthcare service in this community is very good. I think a good service to the community would be evening healthcare and appointments.
1057	67544	HOISINGTON	OTHR			None
1100	67544	HOISINGTON	OTHR			not at this time
1045	67544	HOISINGTON	OTHR			Not having to go to the emergency room for vaccinations would be nice.
1158	67544	HOISINGTON	OTHR			Nothing at this time
1067	67544	HOISINGTON	OTHR			overall, I feel good about our healthcare.
1133	67544	HOISINGTON	OTHR			Yes. I feel there are a couple that could be tremendously improved.
1087	NA	NA	OTHR			no
1106	67526	ELLINWOOD	PHAR	SPEC	DOCS	A pharmacy is needed in Ellinwood!!!! It would also be nice to have more specialty doctors come to our town monthly so our patrons don't have to travel to Hays, Hutch or Wichita as frequently.
1030	67526	ELLINWOOD	PHAR	FAC		Need a pharmacy
1084	67526	ELLINWOOD	PHAR	FAC		need a pharmacy in Ellinwood
1077	67526	ELLINWOOD	PHAR	FAC		Need a pharmacy in Ellinwood.
1078	67526	ELLINWOOD	PHARM			None they are wonderful.a pharmacy would be great

CHNA Round #2 Community Feedback 2015 -Barton Co KS N=199

ID	ZIP	City	c1	c2	c3	Are there healthcare services in your community / neighborhood that you feel need to be improved and / or changed?
1023	67526	ELLINWOOD	QUAL	HOSP	FAC	I dont believe Ellinwood needs a new hospital. The service I have received in the past helped me make the decision to drive 10 minutes to Great Bend or 20 to Hoisington. Ellinwood does not always provide quality care and lacks appropriate training for caring for children
1098	67530	GREAT BEND	SPEC	ACC		More specialty doctors like heart/lung/kidney doctors that are local
1063	67526	ELLINWOOD	SPEC-ALL	ACC	DOCS	Allergist needed
1003	67544	HOISINGTON	SPEC-OBG	DOCS	ACC	Womens care services
1071	67525	CLAFLIN	SPEC-PEDS			There is a need for a Pediatrician in Hoisington.
1028	67525	CLAFLIN	SPEC-PEDS			Yes, we need a Pediatrician at CBH.
1113	67544	HOISINGTON	SPEC-PEDS			Pediatric Services
1179	67530	GREAT BEND	TPRG			More education about teen pregnancy
1192	67450	HOLYROOD	TRAN	DIAB	ALT	transportation to services for those that do not have a vehicle especially after hours diabetic education expanded telehealth services
1140	67525	CLAFLIN	URG			Weekend & evening urgent care/walkin clinic would be beneficial to keep more patients local & not going to Great Bend.
1189	67544	HOISINGTON	URG	EMRM		WEEKEND CLINICS OTHER THAN THE EMERGENCY ROOM.
1114	67526	ELLINWOOD	VACC			Perhaps vaccinations, Booster Vaccines, could be given at one time, like we have flu shot clinics for the community
1191	67544	HOISINGTON	WAIT	FAC		Less wait time during Clara Barton's walk in clinic.
1108	67530	GREAT BEND	WELL	FIT		We need more wellness options. Low cost exercise classes for all ages.
1164	67544	HOISINGTON	WELL	COMM	OTHR	Community education
1008	67544	HOISINGTON	WELL	NUTR		I wonder if our children are all getting healthy meals. I know grocery prices have gone up considerably

CHNA Report contact :



Vince Vandehaar, MBA
VVV Marketing & Development, LLC
***Adjunct Professor / Professional Healthcare
Marketing & Strategic Planning Consulting
Services***

601 N Mahaffie, Olathe, KS 66061
(913) 302-7264 (C)
VVV@VandehaarMarketing.com

LinkedIn: [vandehaar](#)
Website: VandehaarMarketing.com